



Mini Bag

Design & work: Kokka Fabric

Size : about 16cm (l) x about 30cm (w)
about 9cm (d) ※not including the handle

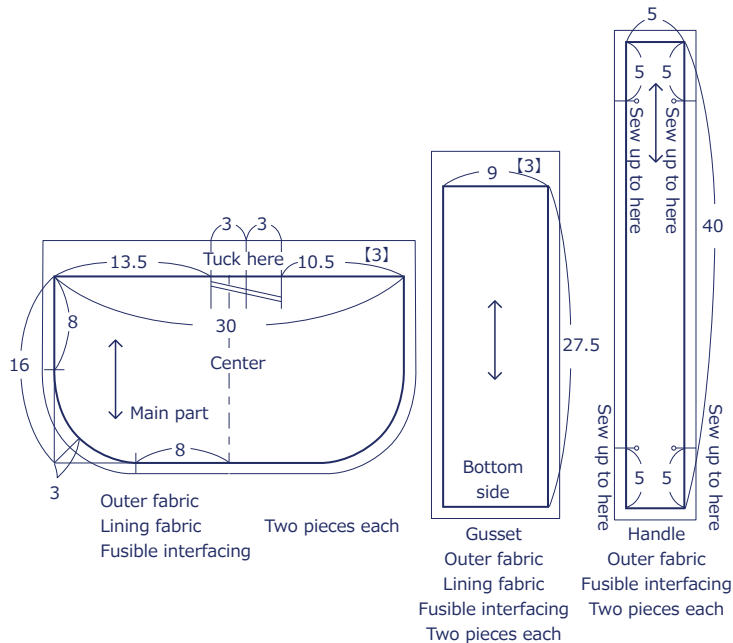
Materials

- Outer fabric: 50cm x 110cm or wider
- Lining fabric: 40cm x 110cm or wider
- Fusible interfacing: 50cm x 90cm or wider
- Magnetic button: 1 pair (15mm diameter)

Fabric shown for this sample: P37400-400 (B)

Pattern

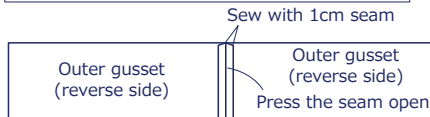
All measurements are in centimeters (cm.) Numbers in [] denote seam allowance. Add 1cm seam unless otherwise stated.



Instructions

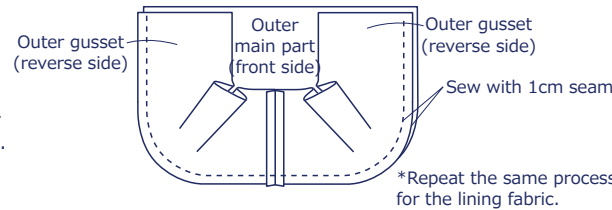
1. Attach the fusible interfacing to the outer main part, outer gusset and outer handle.

2. With the front sides facing each other, sew the gusset at the bottom side.

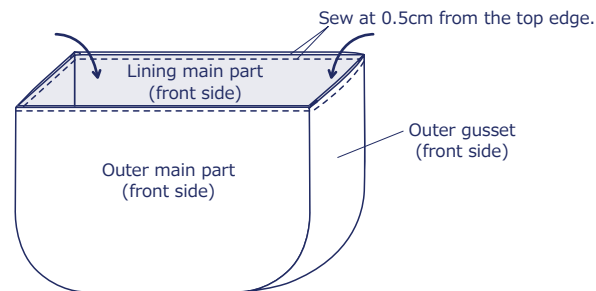


*Repeat the same process for the lining fabric.

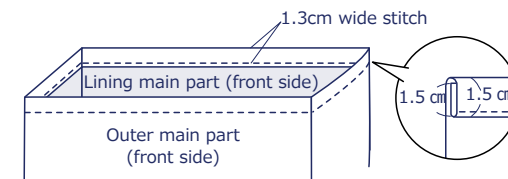
3. With the front sides facing each other, sew together the main part and gusset.



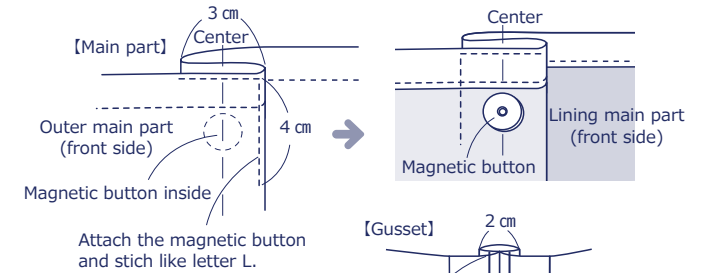
4. With the front sides facing outside, baste together the outer and lining fabrics at the top opening.



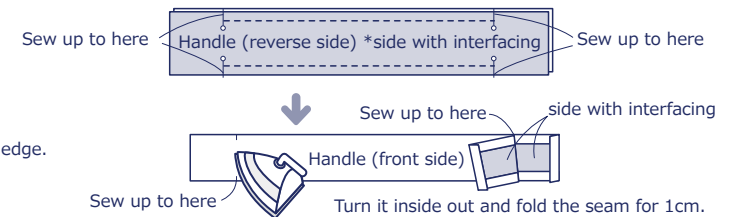
5. Double fold the top opening and run stitches.



6. Create a tuck on the main part and gusset respectively.



7. With the front sides facing each other, sew together the handles.



8. Sew together the gusset and handle to finish.

