



# Zipper Top Tote Bag

Design & work: Kokka Fabric

Size: about 30cm (l)  
about 50cm (w)  
about 20cm (d)  
\*handles excluded

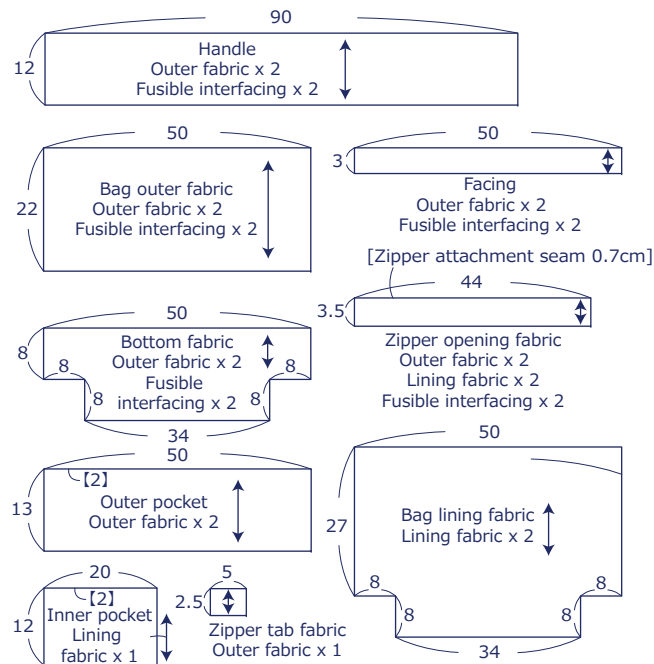
## Materials

- Outer fabric: 110cm wide×110cm
- Lining fabric: 110cm wide×60cm
- Fusible interfacing (Heavy weight): 110cm wide×90cm
- Zipper: One piece (50cm)

Fabric shown for this sample: see design JG80000-101B

## Pattern

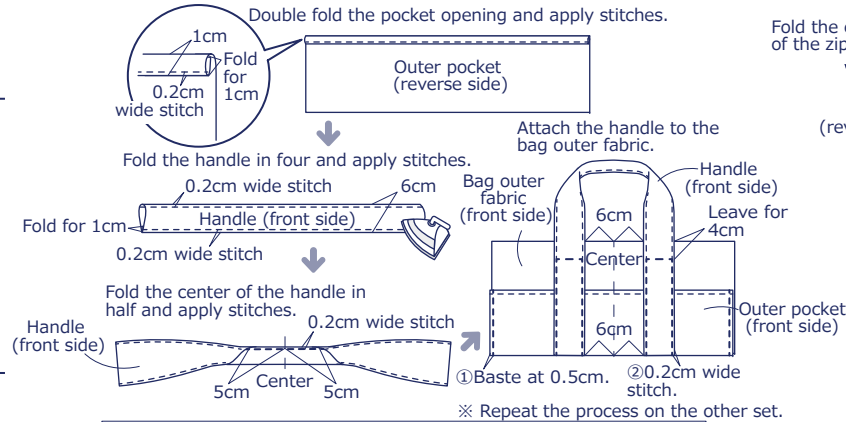
Unit: Centimeters (cm) [ ] : Seam allowance  
Add 1cm seam allowance when you cut the fabric unless otherwise stated.



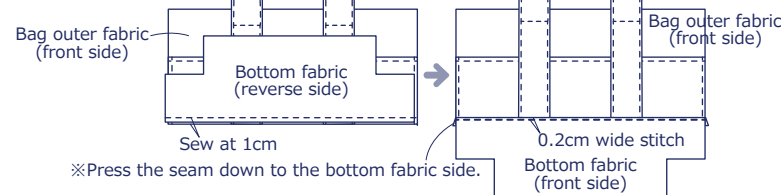
\*Adhere fusible interfacing on the back of the handle, bag outer fabric, bottom fabric, facing and zipper outer opening fabric.

## Instructions

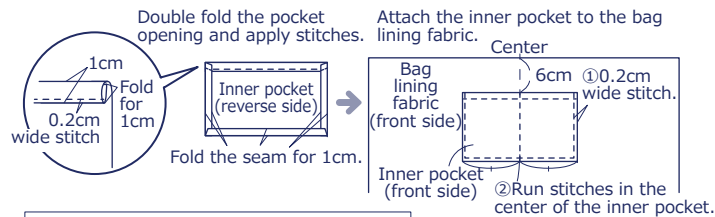
1. Make the handles and outer pocket and attach them to the bag outer fabric.



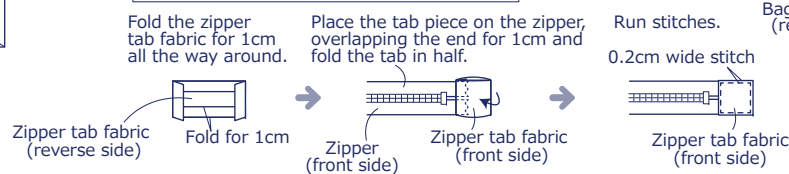
2. With the front sides facing each other, sew together the bag outer fabric and bottom fabric. Turn it over and run stitches.



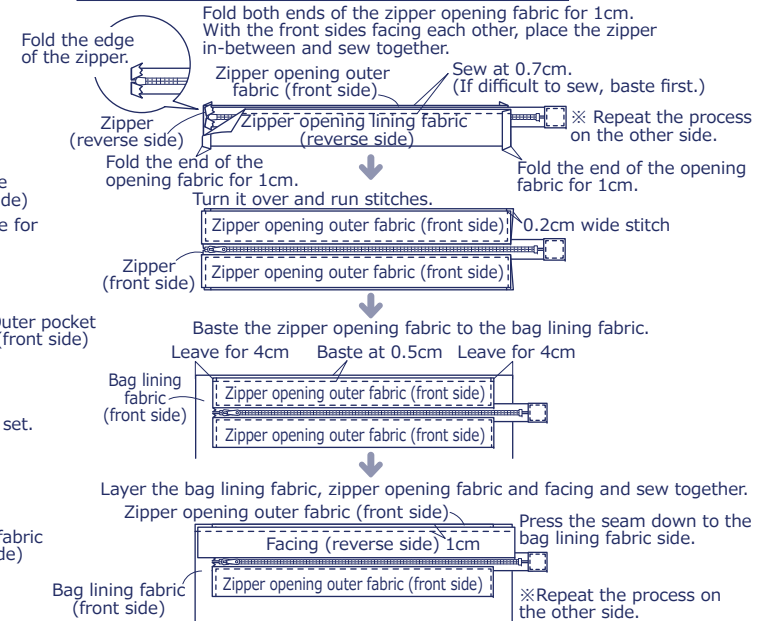
3. Make the inner pocket and attach it to the bag lining fabric.



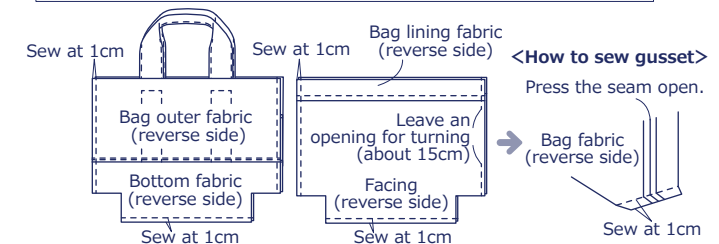
4. Attach zipper tab fabric to the zipper.



5. Layer the bag lining fabric, zipper opening fabric and facing and sew together.



6. With the front sides facing each other, sew together the outer and lining bag fabrics at the sides, bottom and gusset.



7. With the front sides facing each other, sew together the outer and lining bag fabrics at the top opening. Turn it inside out and run stitches around the opening.

