



Shoulder Bag with Just One Meter of Fabric

Finished size
28cm(W) x 20cm(H) x 4cm(D), Handle 60cm(L)
making by Junko Kato

Materials

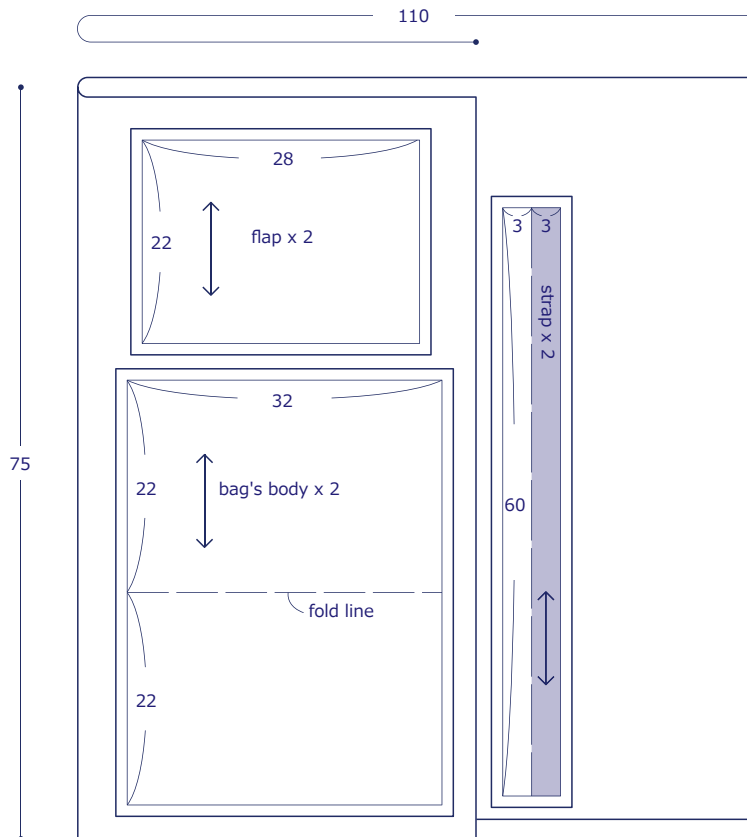
- Fabric: 110cm(W) x 75cm(L)
- Heavyweight Fusible Interfacing: 50cm(W) x 75cm(L)
- 1 Set of Magnetic Button of 1.5cm diameter

Fabric shown for this sample: nunokara Cinderella F100-1 (B)

cutting layout

All seam allowances 1cm.

Cut all pieces including seam allowances. All measurements are in centimeters (cm)



INSTRUCTIONS

Preparation

Fuse the interfacing to the wrong sides of your pieces: outer fabric of bag's body, outer fabric of flap, and the ■ area of strap as shown by the cutting layout.

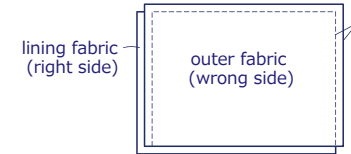
1. Make a strap

Fold the strap in half along the fold line. Fold the seam allowance inside and sew a 0.2cm edge-stitched seam.

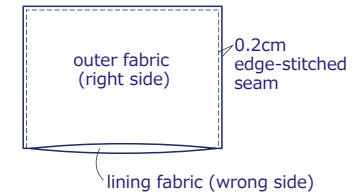


2. Make a flap

①Face right sides of outer fabric with each other. Sew three sides along the edge.

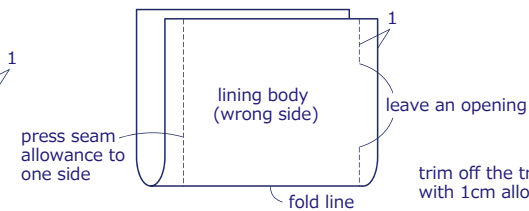
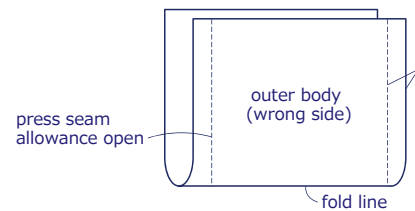


②Turn inside out, press, and sew an edge-stitched seam.

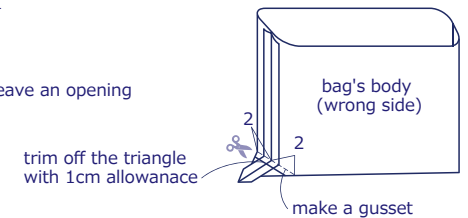


3. Make a bag body

①Fold the outer fabric in half along the fold line to face right sides together and sew. Repeat for the lining.

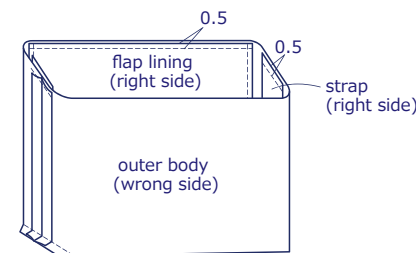


②Sew to square off the corner of the bag per outer and lining body.

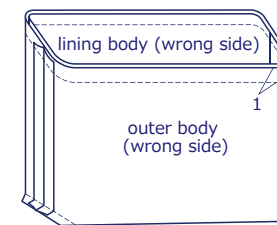


4. Attach strap and flap

①Baste the strap and the flap to the outer body.



②Insert the lining body into the outer so that their right sides are together. Sew both top seams together.



③Pull the outer body through the opening of the lining. Sew a 0.2cm edge-stitched seam.

