



Puffy bag in Kokeshi fabric with bamboo handle

Design & work created by *RT2 HANDMADE Yumi Kanaya

Size: Bag (roughly): 29cm (h), 40cm (w), 12cm (d)
 Drawstring bag: 21.5cm (h), 21.5cm (w)

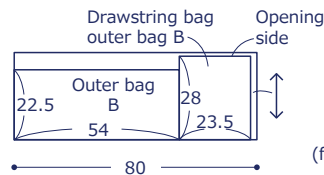
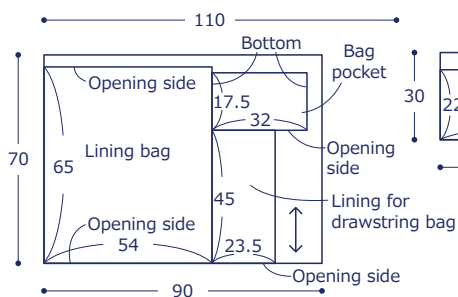
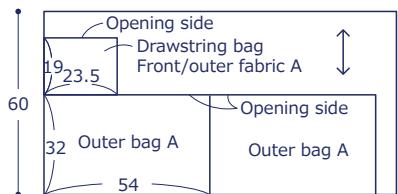
Materials

- Fabric (Outer bag A, Drawstring Bag outer bag A) : 110cm×60cm (Outer bag B, Drawstring Bag outer bag B) : 80cm×30cm (Lining bag, pocket, lining for drawstring bag) : 90cm×70cm
- Interfacing : 90cm×80cm
- Torchon Lace: 1.4m (2.5cm width)
- Lace : 20cm (3cm width)
- Cotton rope: 1.3m (size 0.3cm)
- Button: Two pieces (size 1.5cm)
- Handle: One pair (inside width 19cm)

Fabric shown for this sample: P26300-301 (D)

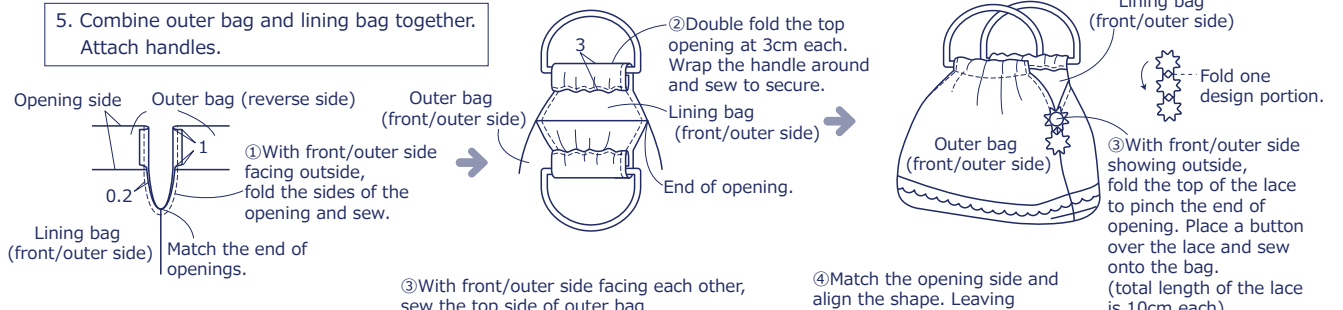
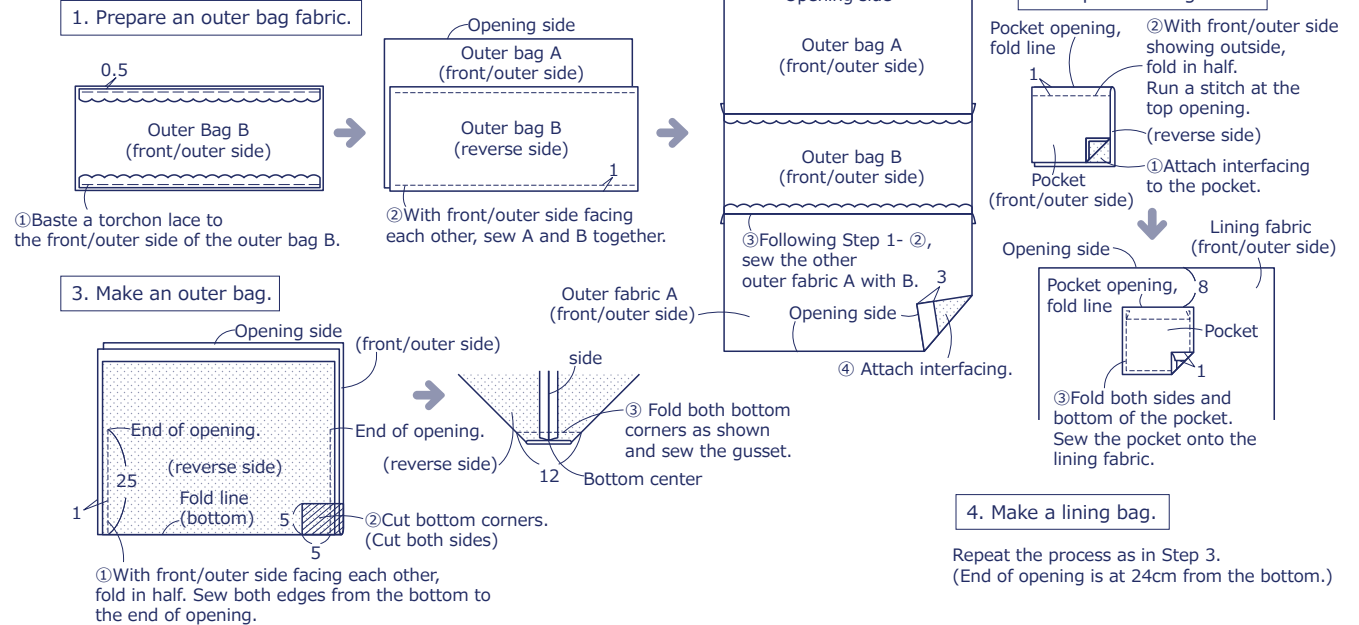
Pattern and Cutting layout

All measurements are in centimeters (cm). All edges are left cut.



Instructions

● Bag



● Drawstring Bag

