



Folkloric Style Dress

Design & work: Anri

Size: 92.6cm (chest)
 92.5cm (dress length)
 45cm (sleeve length)

have fun with KOKKA fabric! produced by **KOKKA**

kokka-fabric.com

Materials

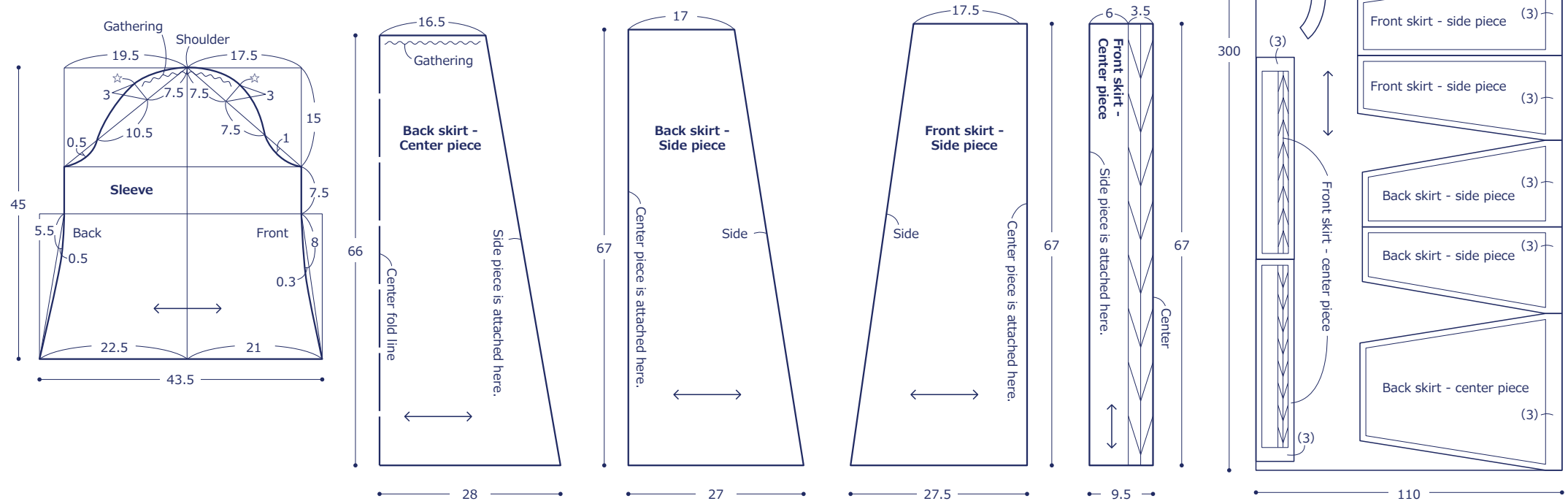
- Fabric: 110cm wide x 3m
- Fusible Interfacing: 50cm x 50cm

Fabric shown for this sample: P34700-700 (D)

Pattern & Cutting Layout

All measurements are in centimeters (cm.)

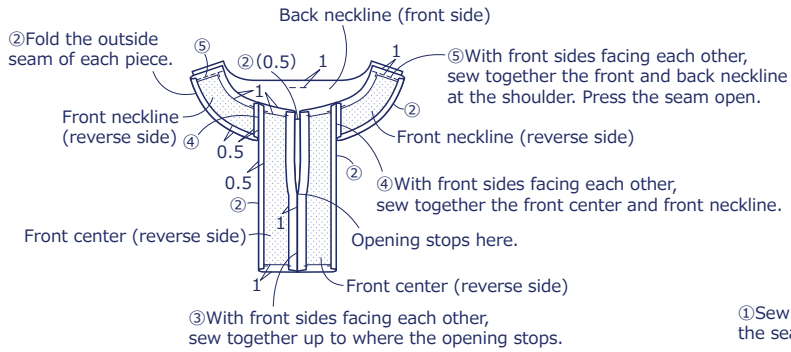
Pattern Making ☆ = gathering stops here



Sewing Instructions

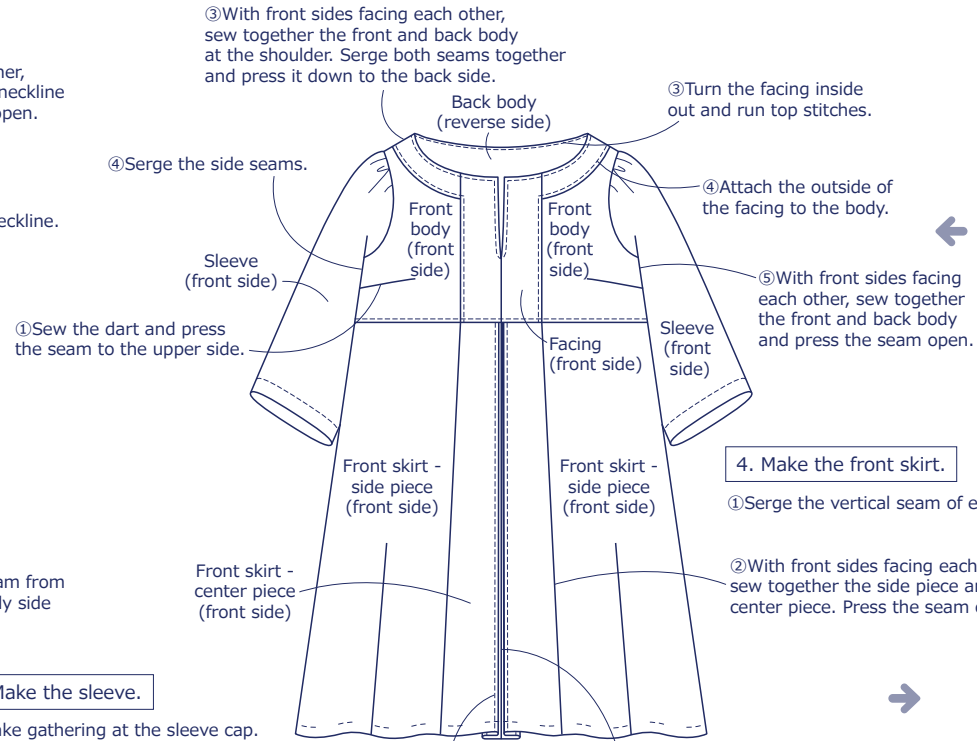
1. Make the facing.

① Cut each parts with designated seam allowance.

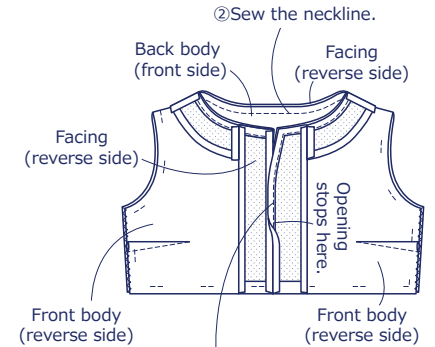


2. Make the body.

② With front sides facing each other, sew together the front body. Sew it starting from the end of the opening to the waist line.



3. Attach the facing.



① As shown, layer the body and facing and sew from the opening to the top.

7. Sew together the body and skirt.

① With front sides facing each other, sew together the body and skirt. Serge both seams together and press it down to the body side.

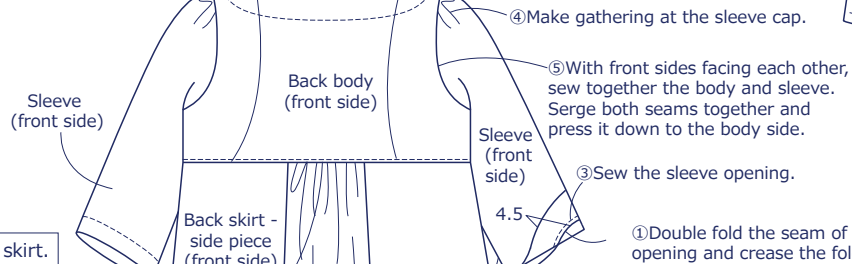
② Press down the seam from process ① to the body side and run top stitches.

4. Make the front skirt.

① Serge the vertical seam of each parts.

② With front sides facing each other, sew together the side piece and center piece. Press the seam open.

9. Make the sleeve.



5. Make the back skirt.

① Serge the vertical seam of each parts.

③ Make gathering in the center on the body attachment side.

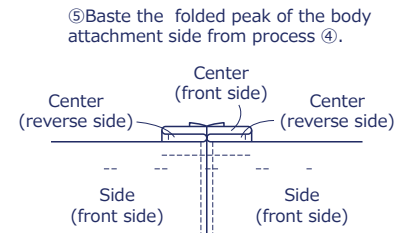
② With front sides facing each other, sew together the pieces and press the seam open.

6. Sew together the front and back skirt.

With front sides facing each other, sew together the front and back skirts and press the seam open.

8. Finish the seam.

Double fold the seam and sew.



have fun with KOKKA fabric! produced by **KOKKA**

kokka-fabric.com