

Mini Shoulder Bag

Design & work: Kokka Fabric

Size: 16cm (l) x 16cm (w) x 4cm (d)
 ※Excludes shoulder strap

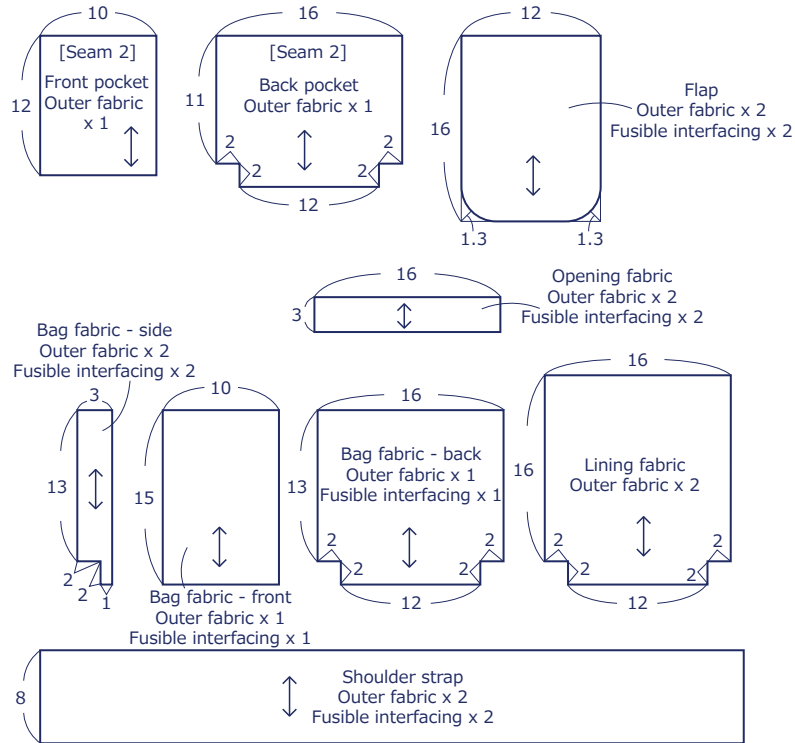
Materials

- Outer Fabric 70cm x at least 110cm wide
- Fusible interfacing 50cm x at least 90cm wide

Fabric shown for this sample: JUBILEE JG44100-1 (B)

Pattern and Cutting Layout

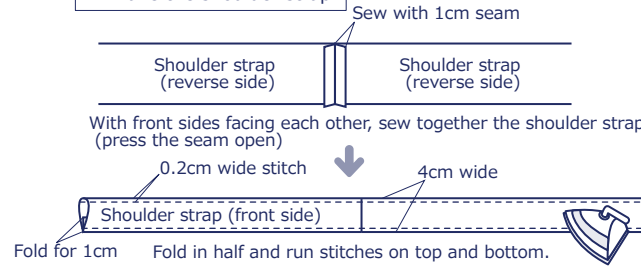
All measurements are in centimeters (cm). Numbers in () denote seam allowance.
 All seam allowances 1cm unless otherwise stated.



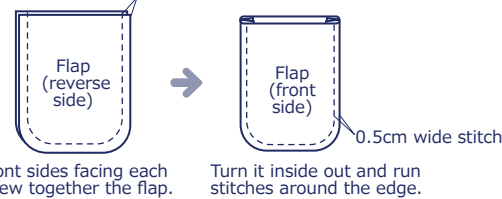
Instructions

1. Attach fusible interfacing on the back of the fabrics. (Flap, Opening fabric, Bag fabrics - sides, front and back, Shoulder strap)

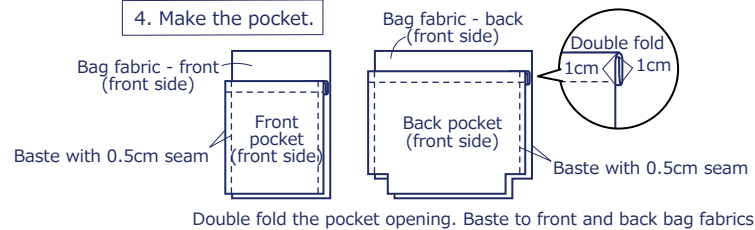
2. Make the shoulder strap.



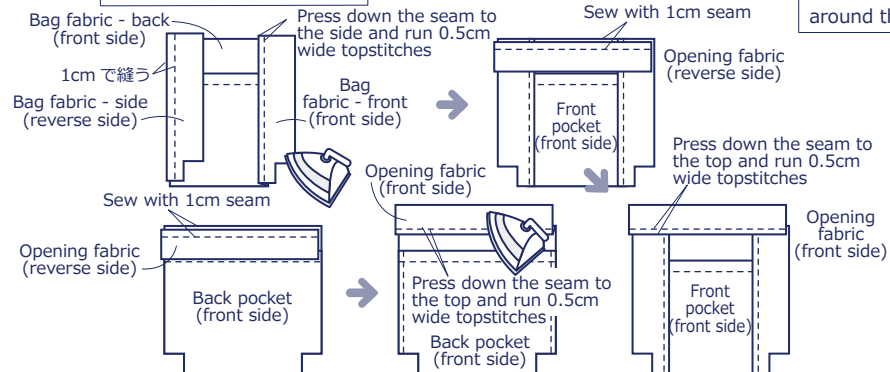
3. Make the flap.



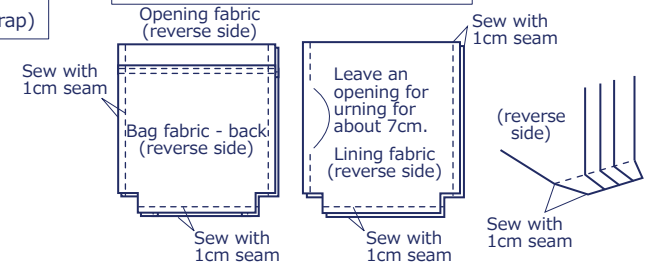
4. Make the pocket.



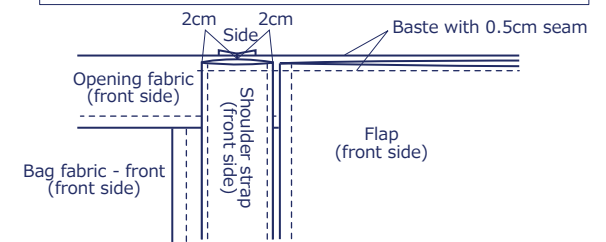
5. Prepare the bag fabrics.



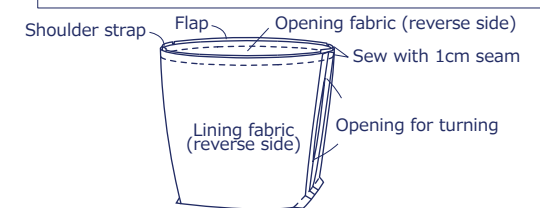
6. Sew the sides, bottom and gusset.



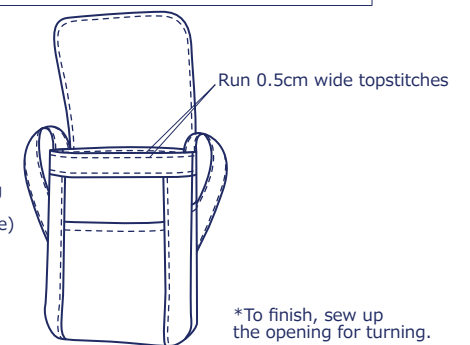
7. Baste the flap and shoulder strap to the opening fabric.



8. With front sides facing each other, sew together the bag fabric and lining fabric at the top opening.



9. Turn the bag inside out and run top stitches around the opening to finish!



*To finish, sew up the opening for turning.