



Bag with an Aluminum Spring Clasp

Design & Work: Yui Tamaki

Size: 41cm (l) 33cm (w) 20cm (d)

have fun with KOKKA fabric! produced by **KOKKA**

kokka-fabric.com

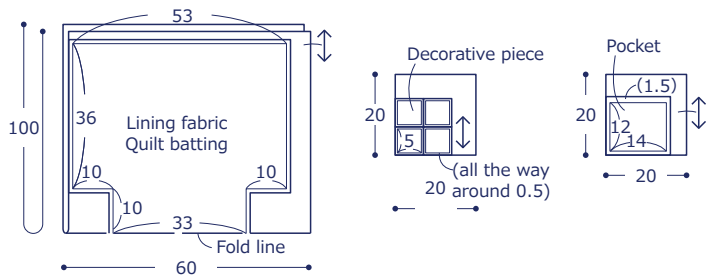
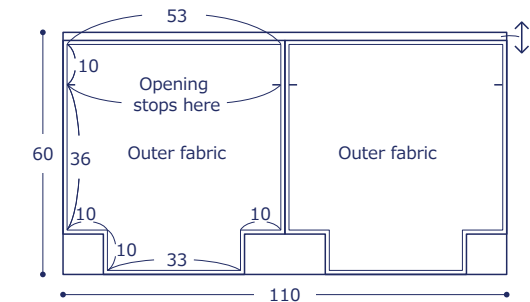
Materials

- Fabric (Outer fabric): 110cm×60cm
(Lining fabric): 60cm×100cm
(Pocket): 20cm×20cm
(Decorative piece): 20cm×20cm
- Fusible interfacing: 110×60cm
- Quilt batting: 110×120cm
- Handle: One pair (55cm long 2cm wide)
- Aluminum spring clasp: One piece (10cm long 30cm wide)

Fabric shown for this sample: P35300-300 (D)

Pattern and Cutting Layout

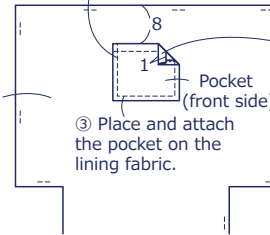
Numbers in () denote seam allowance.
Add 1cm seam allowance unless specified otherwise.



Instructions

1. Make a pocket.

① Run zigzag stitches on the sides and bottom and fold.

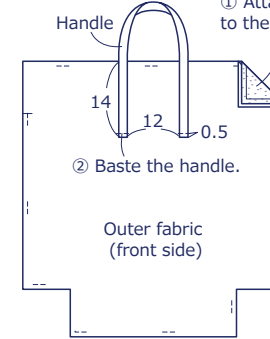


② Double fold the pocket opening and run stitches.

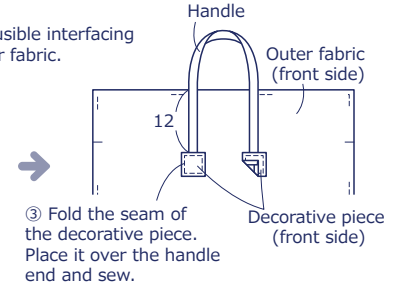
③ Place and attach the pocket on the lining fabric.

2. Attach the handles.

① Attach fusible interfacing to the outer fabric.



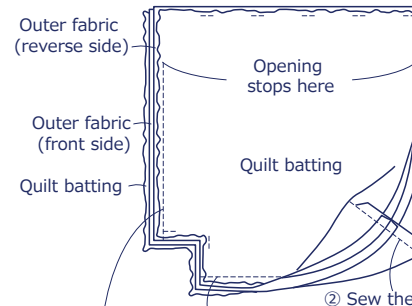
② Baste the handle.



③ Fold the seam of the decorative piece. Place it over the handle end and sew.

• Make two pieces

3. Make the outer bag.

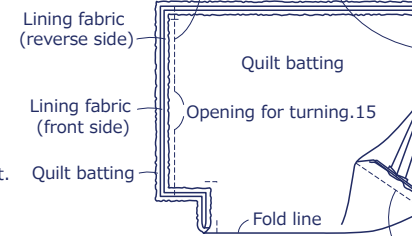


① Layer quilt batting. With front sides facing each other, sew the outer fabrics at the bottom and up to where the opening stops.

② Sew the gusset.

4. Make the lining bag.

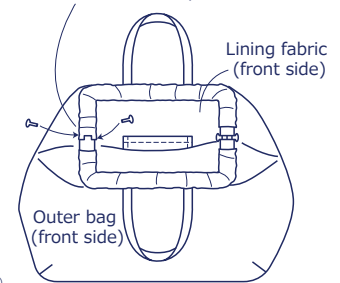
① Layer quilt batting on the lining fabric. With front sides facing each other, fold and sew the sides. (Leave an opening for turning on one side.)



② Sew the gusset.

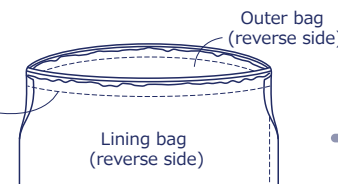
6. Put through the metal clasp.

Put the aluminum spring clasp through the opening. Secure it with a pin.

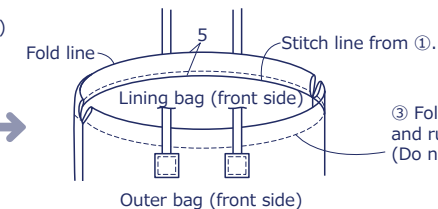


5. Sew together the outer bag and lining bag.

① With front sides facing each other, sew together the outer bag and lining bag at the top opening. (Be careful not to sew handles together.)



② Turn it inside out and close the opening.



③ Fold the top opening as shown and run top stitches. (Do not stitch over handles)