



Shoulder Bag

Design & work: Kokka Fabric

Size: about 28cm (l) x about 42cm (w)
about 14cm (d)
(not including shoulder strap)

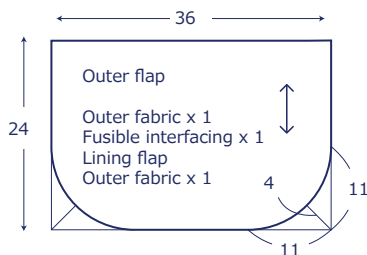
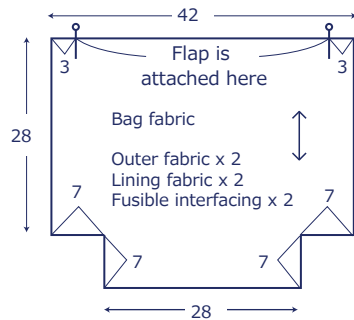
Materials

- Outer fabric 70cm x 110cm wide
- Lining fabric 40cm x 110cm wide
- Fusible interfacing (medium thickness) 70cm x 90cm wide
- Wide tape 110cm x 45mm wide

Fabric shown for this sample: P37700-701 (A)

Pattern and Cutting Layout

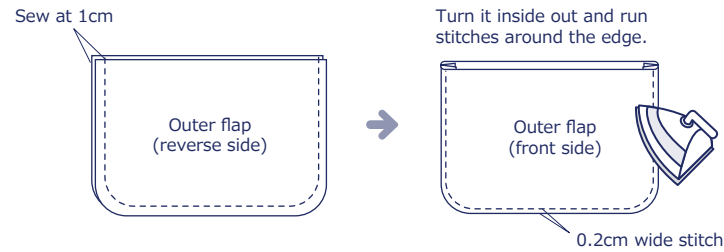
All measurements are in centimeters (cm).
Add 1cm seam when cutting the fabric.



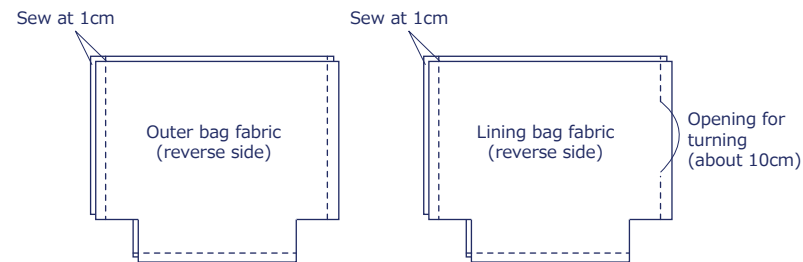
Instructions

1. Adhere interfacing to the reverse side of outer bag fabric and outer flap.

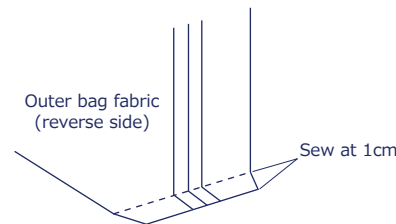
2. With front sides facing each other, sew together outer flap and lining flap. Turn it inside out and run stitches around the perimeter.



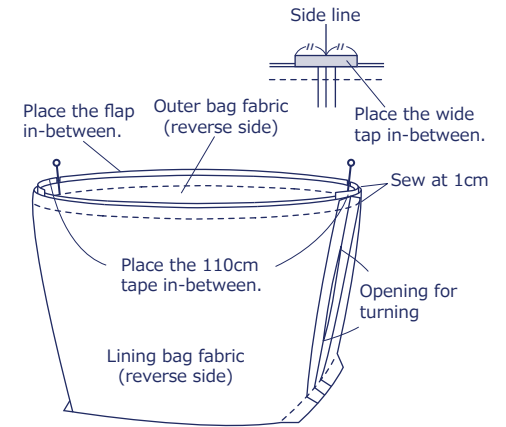
3. With front sides facing each other, sew together the bottom and sides of bag fabrics. Leave an opening for turning on one side of the lining bag fabric.



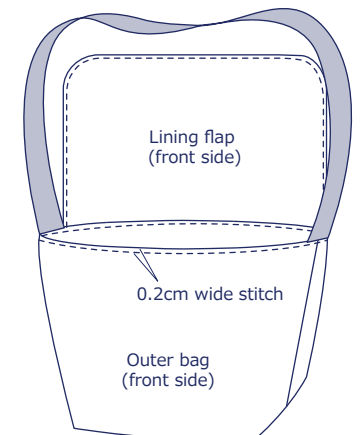
4. Sew the gussets.



5. With front sides facing each other, sew together the outer bag and lining bag at the top, with flap and tape placed in-between.



6. Turn the bag inside out using the opening for turning. Run top stitches around the opening to finish.



*Repeat the process for lining bag.

*Close the opening for turning.