



Dolman Sleeve Dress

Design & work: Anriko

Size: 85.5cm (back length)

have fun with KOKKA fabric! produced by **KOKKA**

kokka-fabric.com

The craft projects and works featured in kokka-fabric.com are strictly for personal use and enjoyment. Please refrain from selling handmade items using the same exact design (including the pieces made in different fabrics) featured in kokka-fabric.com.

Materials

- Fabric: 75cm wide x 2.5m
- Fusible interfacing: 20cm x 20cm
- Thread and Needle for knit sewing

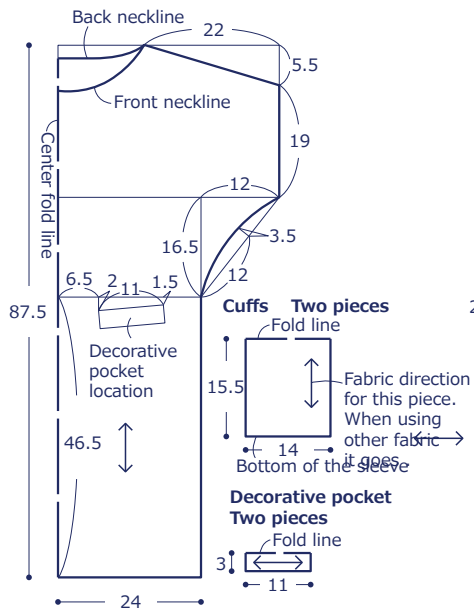
Fabric shown for this sample: echino <block>JG96201-201 (C)

Pattern

All measurements are in centimeters (cm).

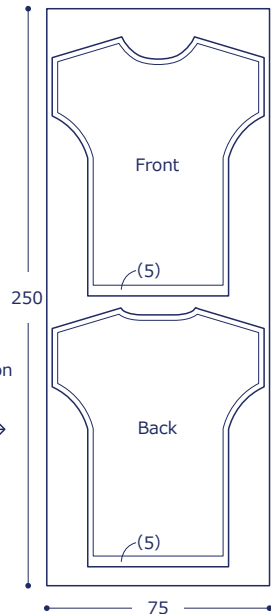
Front and Back One each

Trace the neckline from the pattern.

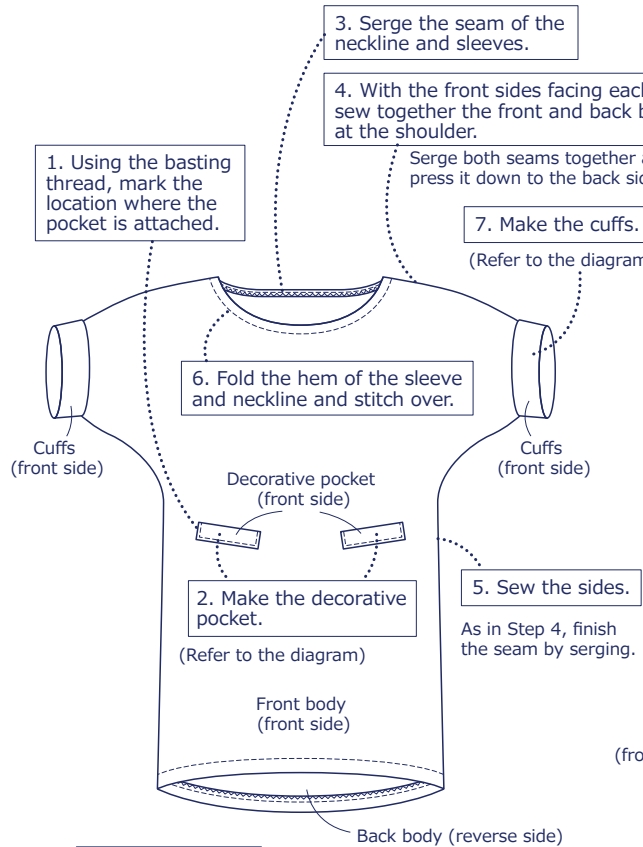


Cutting Layout

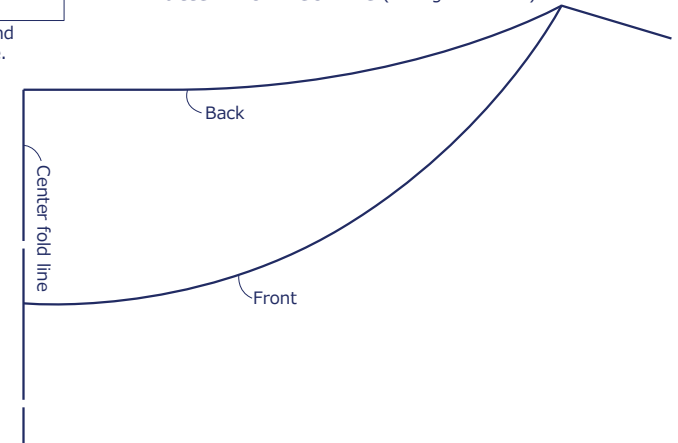
Numbers in () denote seam allowance. Add 1cm seam unless otherwise stated. The cuffs and pocket are taken from the remaining fabric. Check to have an appropriate design balance.



Instructions

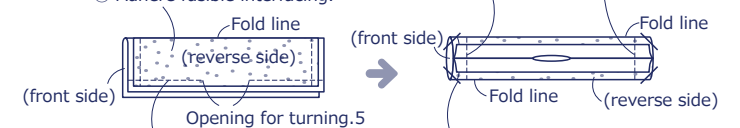


Pattern for Neckline (Enlarge to 200%)



2. Make the decorative pocket.

① Adhere fusible interfacing.



② With the front sides facing each other, fold in half. Sew the long sides leaving an opening for turning.

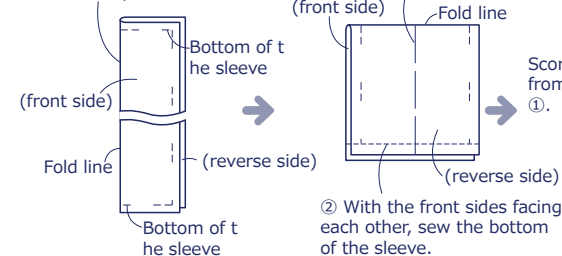
③ Move the stitch line from process ② to the center. Sew the short ends.

④ With the front sides facing each other, sew together the front/back body and cuffs.

④ Cut off the corner seam. ※Make two pieces.
 ⑤ Turn it inside out. Close the opening. Attach them to the front of the dress.

7. Make the cuffs.

① With the front sides facing outside, score the fabric.



② With the front sides facing each other, sew the bottom of the sleeve.

③ Turn it inside out and fold with the front sides facing outside.

