



# Raglan Sleeve Blouse

Design & work created by KOKKA Fabric

Size: Medium

## Materials

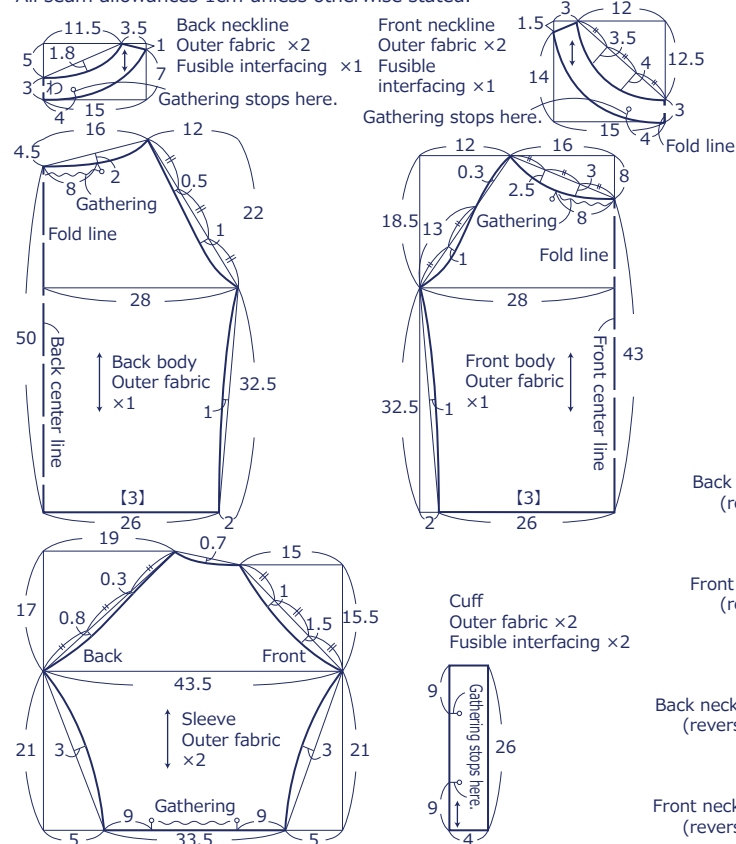
- Fabric: 110cm wide × 170cm
- Fusible interfacing: 90cm wide × 40cm

Fabric shown for this sample: echino Huedrawer JG96300-300 (c)

## Pattern and Cutting Layout

All measurements are in centimeters (cm).

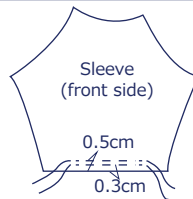
All seam allowances 1cm unless otherwise stated.



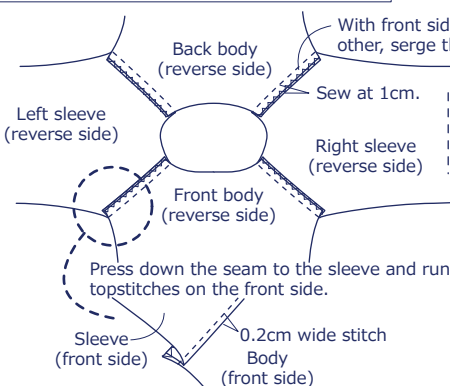
## Instructions

1. Adhere interfacing to the reverse side of both front and back neckline and cuff.

2. Run rough stitches at the cuff opening.

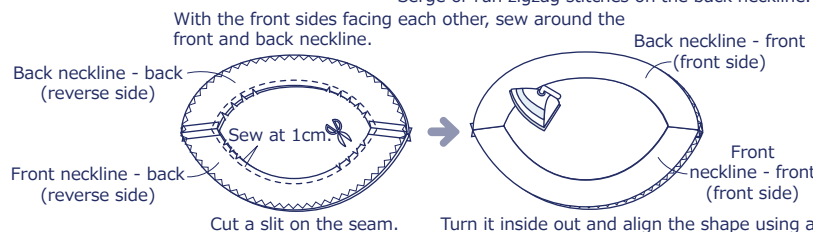
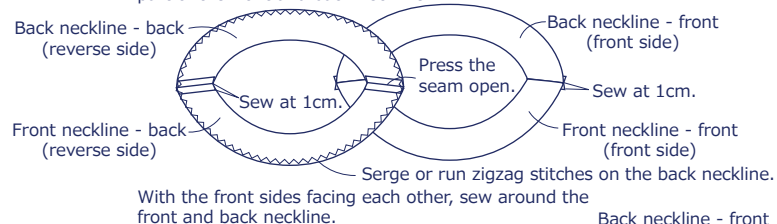


3. With the front sides facing each other, sew together the sleeve and bodies.



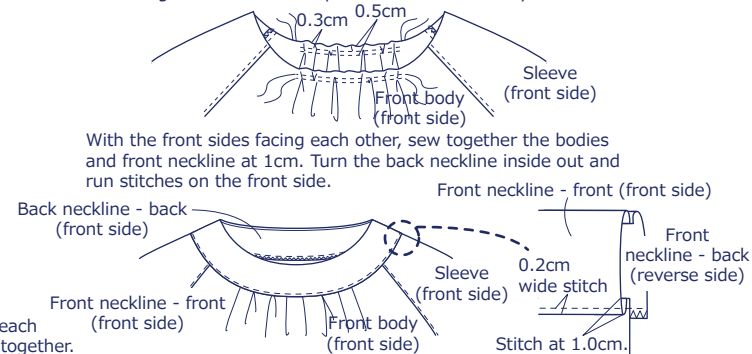
4. Prepare the neckline.

With the front sides facing each other, sew together the shoulder part of the front and back neckline.

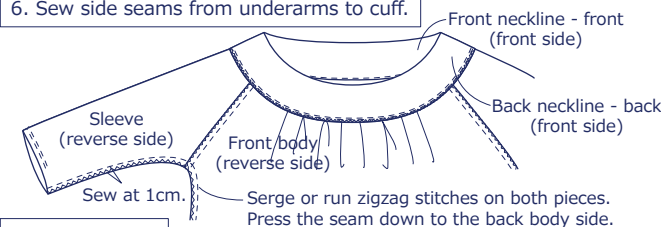


5. Attach the neckline.

Run rough stitches at the top of front and back body's neckline.

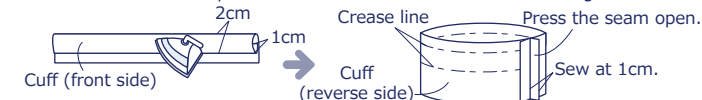


6. Sew side seams from underarms to cuff.

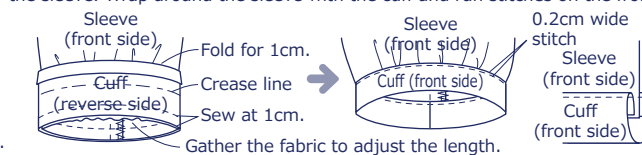


7. Sew the cuff.

Iron the cuffs to score. Open them and sew with the front sides facing each other.



With the front sides facing each other, sew together the cuff and the end of the sleeve. Wrap around the sleeve with the cuff and run stitches on the front side.



8. Double fold the hem and run stitches to finish.

