



Dress with a bow for a grown up

Design & work: Kokka Fabric

Size: Free

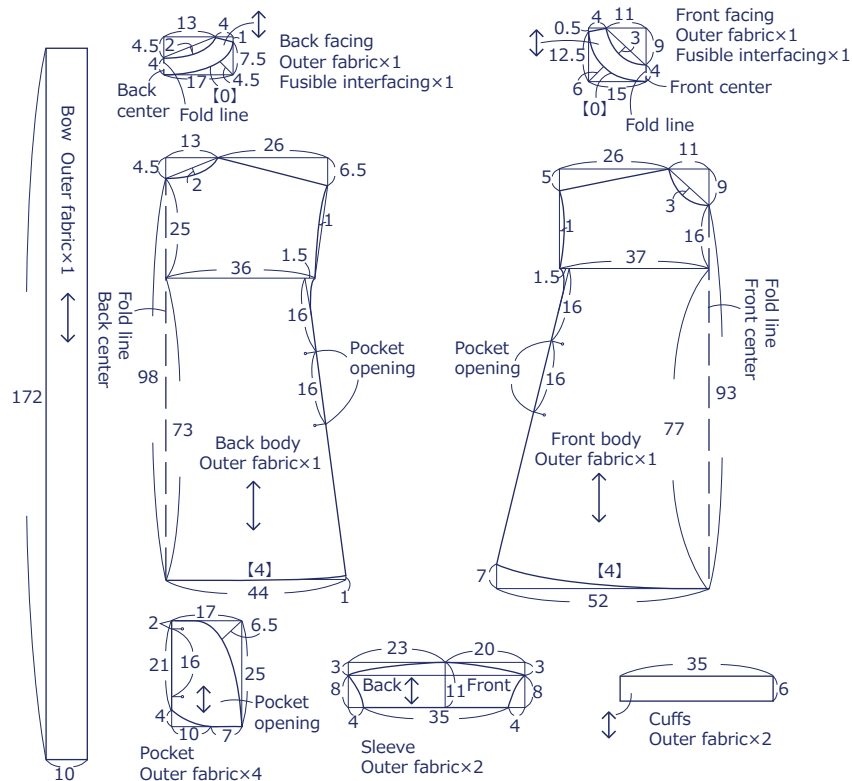
Materials

- Outer fabric 110cm wide×290cm
- Fusible interfacing 90cm wide×20cm

Fabric shown for this sample: ellen baker ROUGH CUT MATCHSTICKS JG42600-600C

Pattern and Cutting Layout

Unit: Centimeters (cm) []: Seam allowance
Add 1cm seam allowance when you cut the fabric unless otherwise stated.



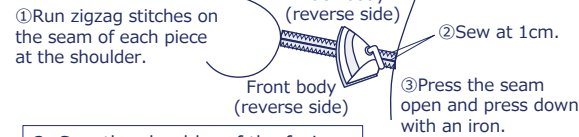
have fun with KOKKA fabric! produced by **KOKKA**

kokka-fabric.com

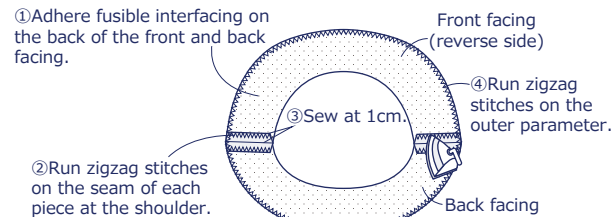
The craft projects and works featured in kokka-fabric.com are strictly for personal use and enjoyment.
Please refrain from selling handmade items using the same exact design (including the pieces made in different fabrics) featured in kokka-fabric.com.

Instructions

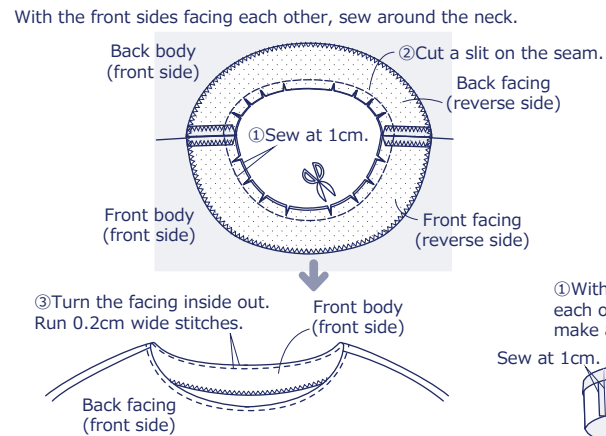
1. Sew the shoulder of the body.



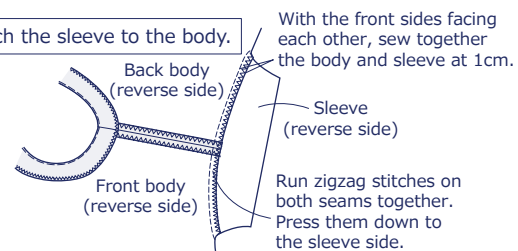
2. Sew the shoulder of the facing.



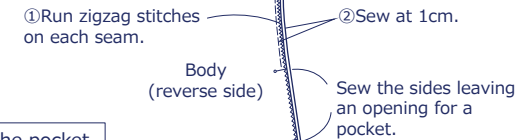
3. Attach the facing to the body.



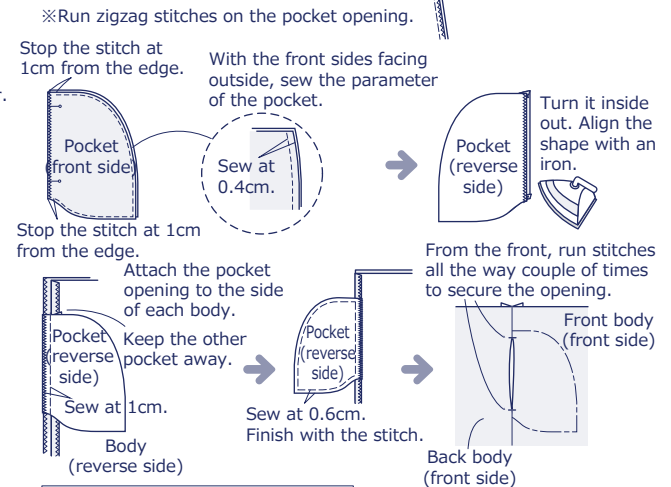
4. Attach the sleeve to the body.



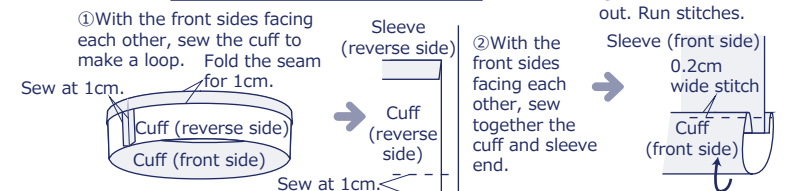
5. Sew together the areas from the underarm to the side.



6. Make the pocket.



7. Attach the cuff to the sleeve.



8. Double fold the hem and sew.

