



Tuck Blouse

Design & work created by KOKKA Fabric

Size: Medium

The craft projects and works featured in kokka-fabric.com are strictly for personal use and enjoyment. Please refrain from selling handmade items using the same exact design (including the pieces made in different fabrics) featured in kokka-fabric.com.

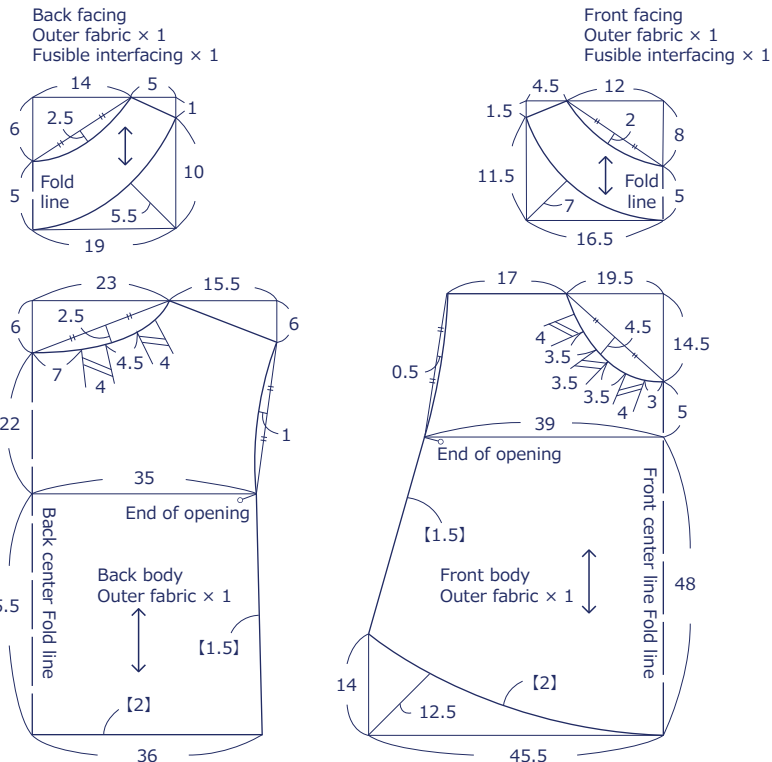
Materials

- Outer fabric: 97cm x 180cm
- Fusible interfacing (thin): 90cm wide x 20cm

Fabric shown for this sample: TSUMIKI PG104-1(A)

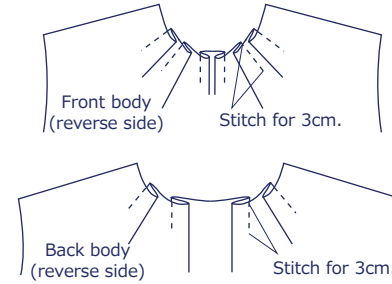
Pattern

Unit: cm []: Seam measurement. All seam allowances 1cm unless otherwise stated.

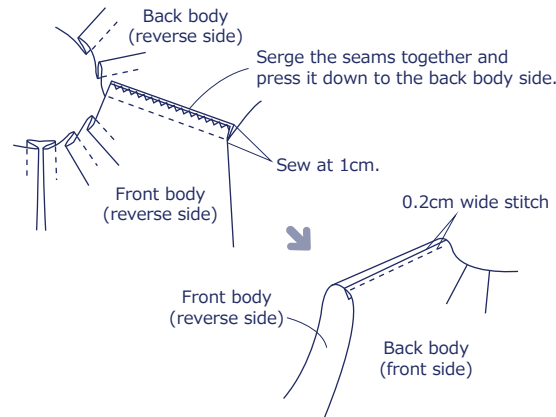


Instructions

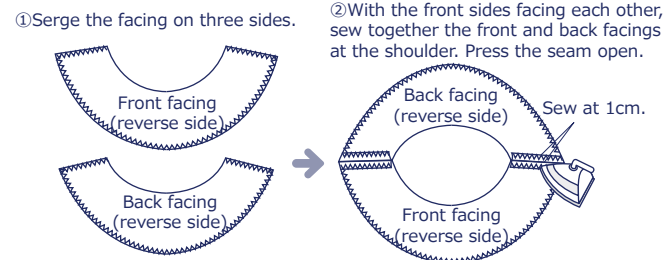
1. Fold the tucks on the front body and back body and sew.



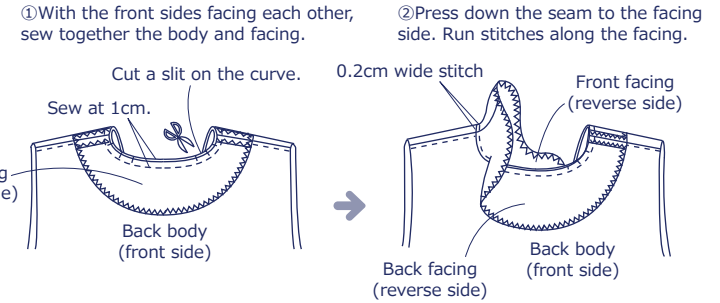
2. With the front sides facing each other, sew together the front body and back body at the shoulder.



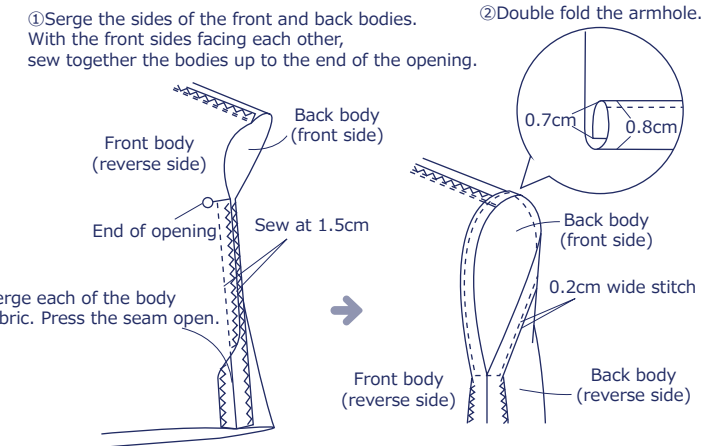
3. Sew the shoulder of the facing.



4. Attach the facing to the body.



5. Sew both sides. Double fold the armhole and sew.



6. Double fold the hem and sew.

