



Square One Piece Dress

Design & work: Kokka Fabric

Size: Chest 156cm, Length 83cm

have fun with KOKKA fabric! produced by **KOKKA**

kokka-fabric.com

The craft projects and works featured in kokka-fabric.com are strictly for personal use and enjoyment. Please refrain from selling handmade items using the same exact design (including the pieces made in different fabrics) featured in kokka-fabric.com.

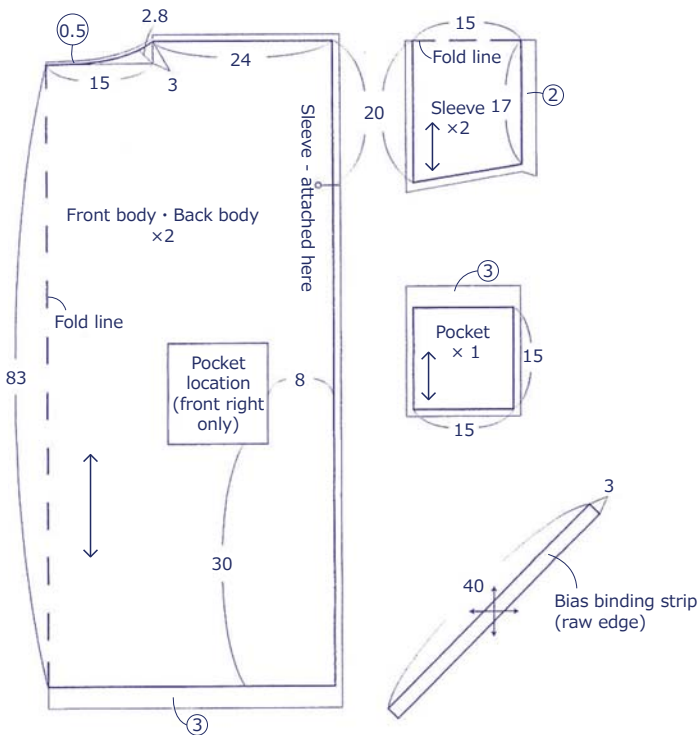
Materials

□ Outer fabric 110cm wide x 200cm

Fabric shown for this sample: P44100-100(A)

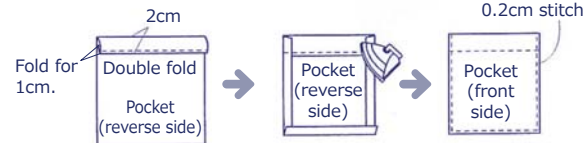
Pattern and Cutting Layout

Unit: Centimeters (cm) ○: Seam allowance
Add 1cm seam allowance unless otherwise stated.

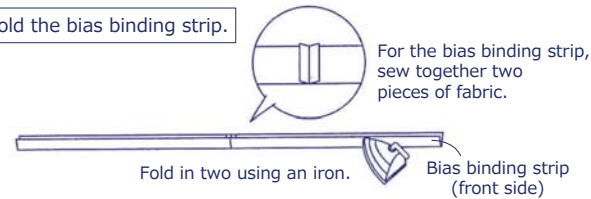


Instructions

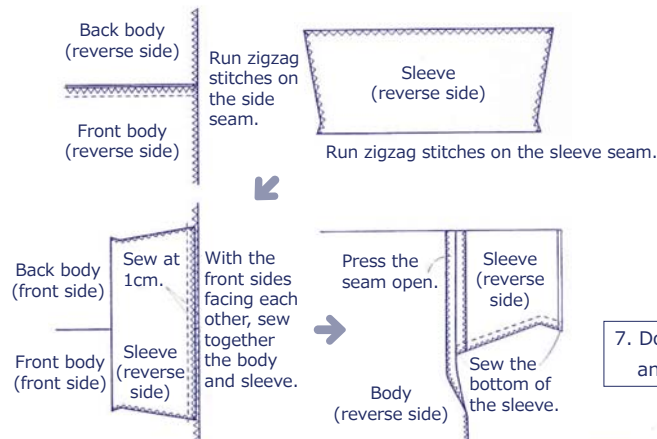
1. Make the pocket and attach it to the front body.



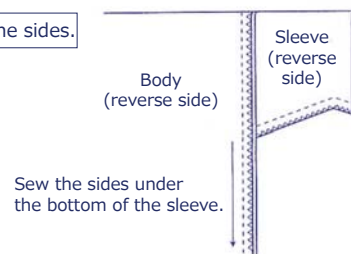
3. Fold the bias binding strip.



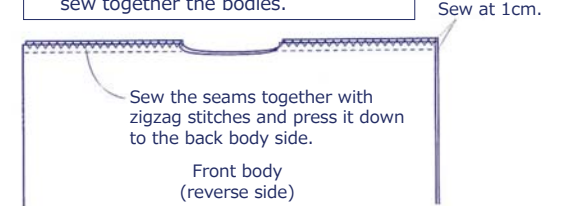
5. Attach the sleeve and sew bottom of the sleeve.



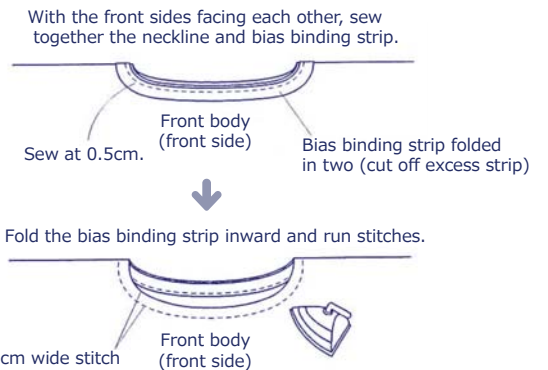
6. Sew the sides.



2. With the front sides facing each other, sew together the bodies.



4. Attach the bias binding strip around the neckline.



7. Double fold the sleeve opening and hem and run stitches to finish.

