



Tunic Style Dress

Design & work: Anriko

Size: 97.5cm (from back center neckline to the hem)

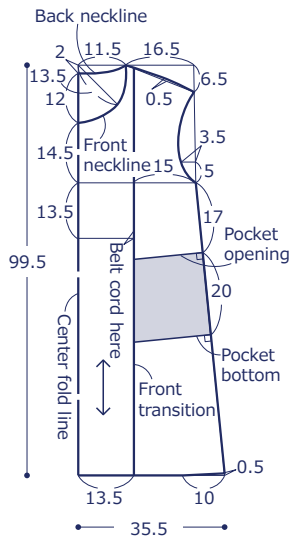
Materials

- Fabric: 110cm wide x 2.7m
- Double fold bias binding tape: 2cm wide x 1.8m

Fabric shown for this sample: EFXA3000-1A

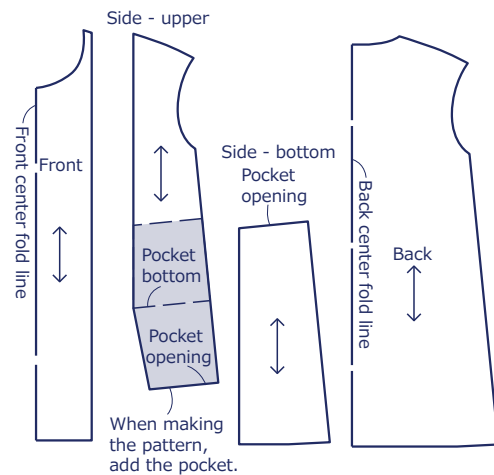
Pattern

Unit: cm



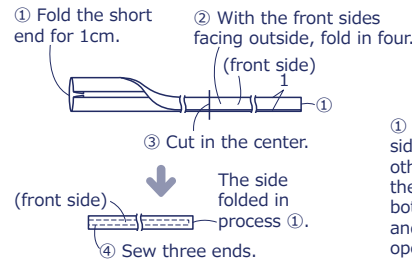
Pattern Cutout

Unit: cm

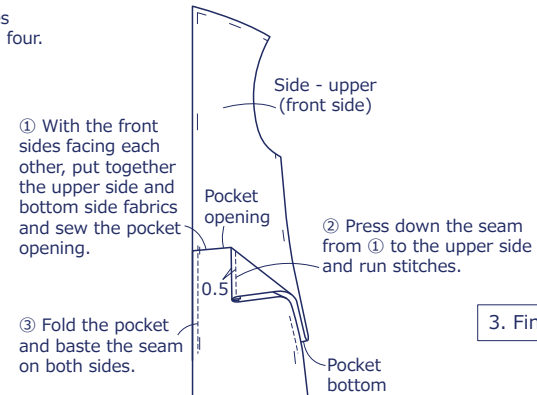


Instructions

1. Make the belt cord

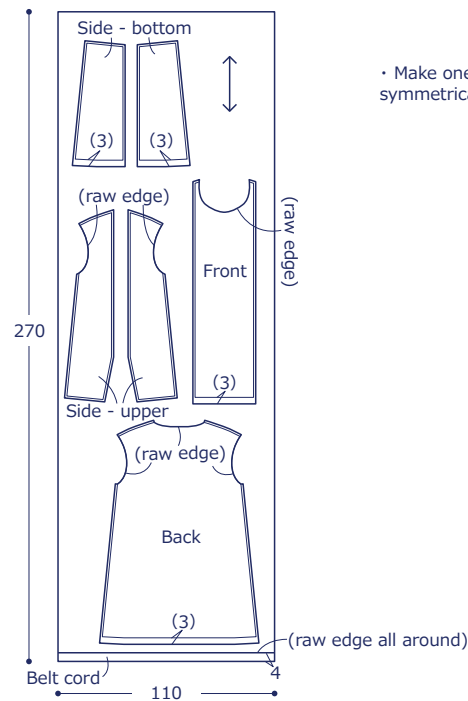


2. Make the sides



Cutting Layout

Numbers in () denote seam allowance. Add 1cm seam allowance unless specified otherwise. When matching the design, allow 10% to 20% more fabric for cutting.



have fun with KOKKA fabric! produced by KOKKA

kokka-fabric.com

The craft projects and works featured in kokka-fabric.com are strictly for personal use and enjoyment. Please refrain from selling handmade items using the same exact design (including the pieces made in different fabrics) featured in kokka-fabric.com.

3. Finish the dress.

