



# Shoulder Bag

Design & work: Kokka Fabric

Size: about 29cm (l)  
about 40cm(w)  
about 14cm(d) (excludes handles)

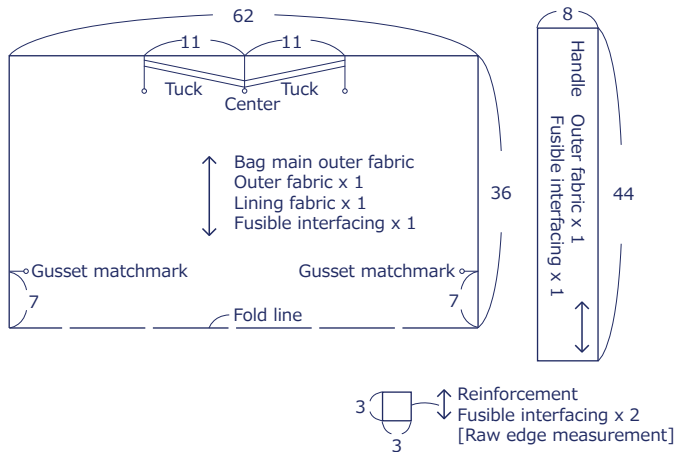
## Materials

- Outer Fabric: 110cm wide x 80cm
- Lining Fabric: 90cm wide x 80cm
- Fusible interfacing (heavy weight): 110cm wide x 80cm
- Magnetic clasp (hook type) : 15mm (one pair)

Fabric shown for this sample: YK-61020-1B

## Pattern

Unit: Centimeters (cm)  
Add 1cm seam allowance when cutting the fabric.



※ Adhere fusible interfacing on the back of the outer fabrics.  
Reinforcement is for attaching the magnetic hook.

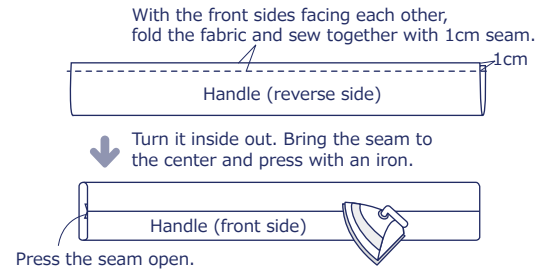
have fun with KOKKA fabric! produced by KOKKA

[kokka-fabric.com](http://kokka-fabric.com)

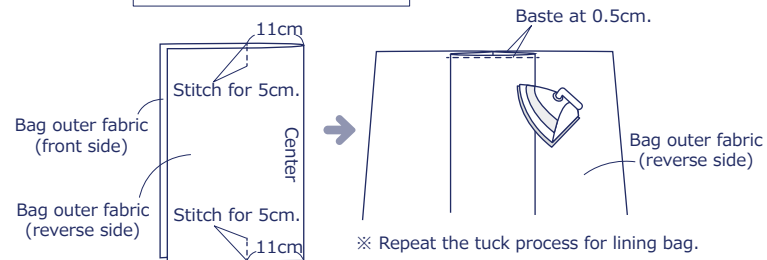
The craft projects and works featured in kokka-fabric.com are strictly for personal use and enjoyment. Please refrain from selling handmade items using the same exact design (including the pieces made in different fabrics) featured in kokka-fabric.com.

## Instructions

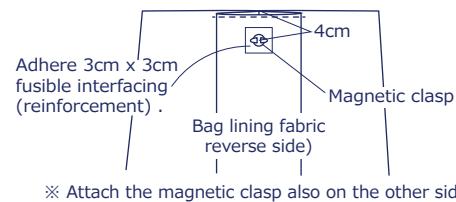
### 1. Make the handle



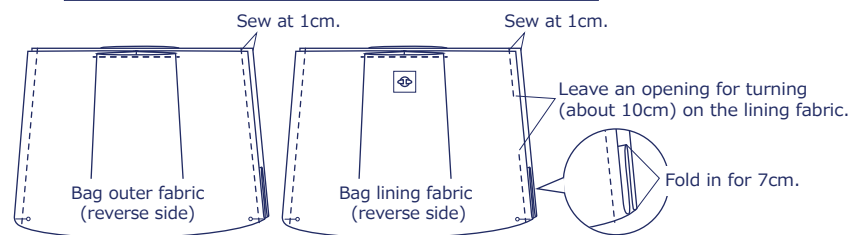
### 2. Sew the tucks of the bag



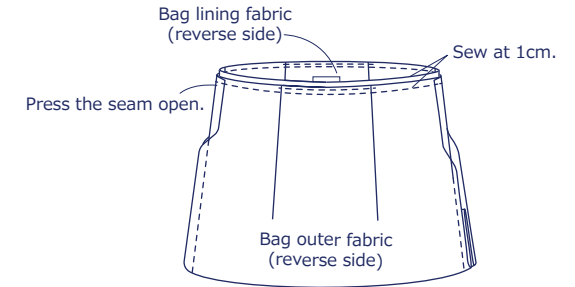
### 3. Attach the magnetic clasp on the bag lining fabric



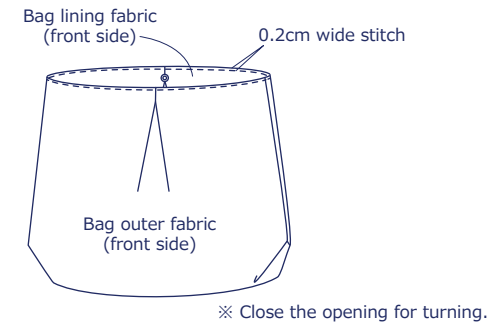
### 4. Fold the gusset on the side of the outer bag and sew



### 5. With the front sides facing each other, sew together the bag outer fabric and lining fabric at the opening



### 6. Using the opening for turning, turn the bag inside out and run stitches around the opening



### 7. Attach the handle to finish

