



Three Piece Set for Travels

Design & work: Kokka Fabric

Size:

Tote bag: about 34cm (l) x 30cm (w) (excludes handles)

Drawstring bag: about 28cm (l) x about 20cm (w)

Pouch: about 13cm (l) x about 21cm (w) x 5cm (d)

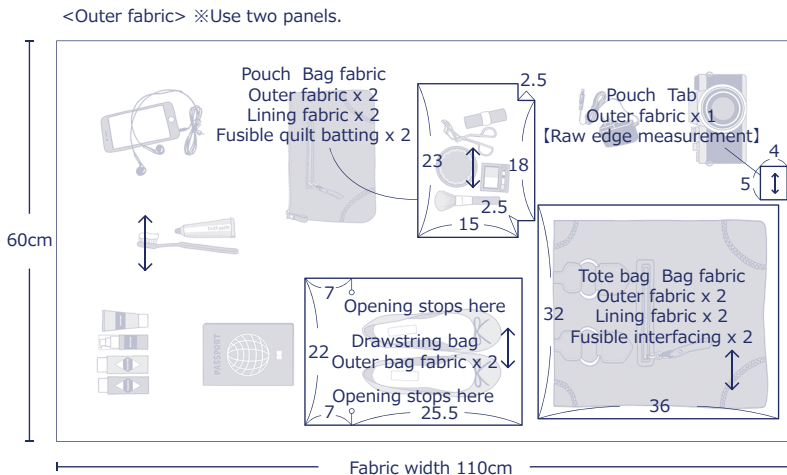
Materials

- Outer fabric: about 110cm wide x 120cm (Use two panels)
- *Pick the pattern you like to give your own twist.
- Lining fabric: about 110cm wide x 40cm
- Fusible interfacing (medium weight): about 90cm wide x 40cm
- Fusible quilt batting: about 90cm wide x 30cm
- Flat tape: 104cm (25mm wide)
- Round rope (medium size): 110cm
- Zipper: One piece (20cm)

Fabric shown for this sample: YKA-61070-1A

Pattern

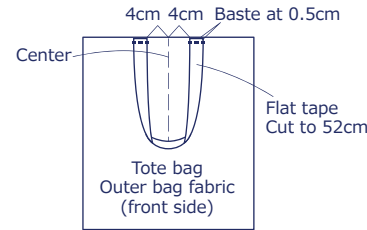
Unit: cm (measurement includes seam)



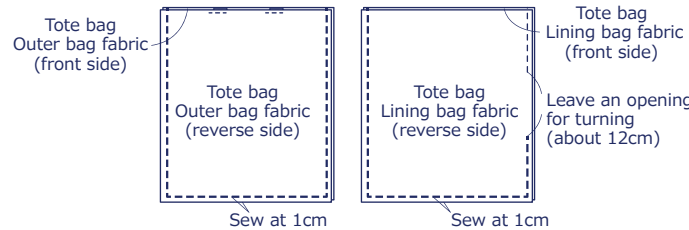
- ※ This is just an example of how you can select the design for cutting.
- ※ Adhere fusible interfacing on the back of the outer fabric of the tote bag.
- Adhere fusible quilt batting on the back of the outer bag fabric of the pouch.

Instructions

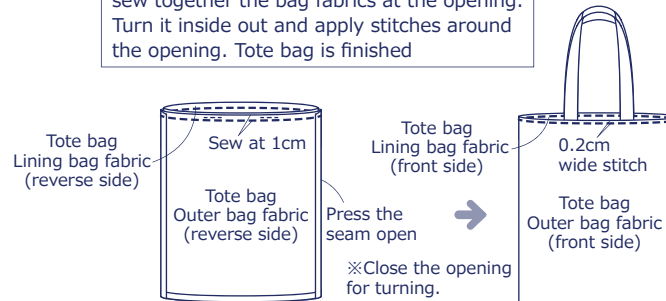
1. Baste the flat tape on the outer bag fabric of the tote bag



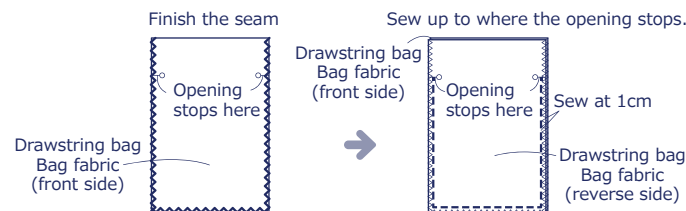
2. With the front sides facing each other, sew together the bag fabrics at the sides and bottom



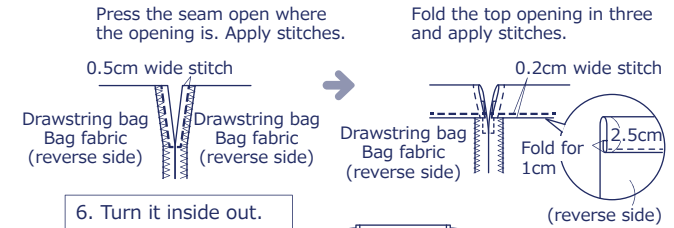
3. With the front sides facing each other, sew together the bag fabrics at the opening. Turn it inside out and apply stitches around the opening. Tote bag is finished



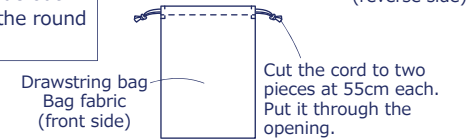
4. Finish the seam of the drawstring bag. With the front sides facing each other, sew together the sides and bottom



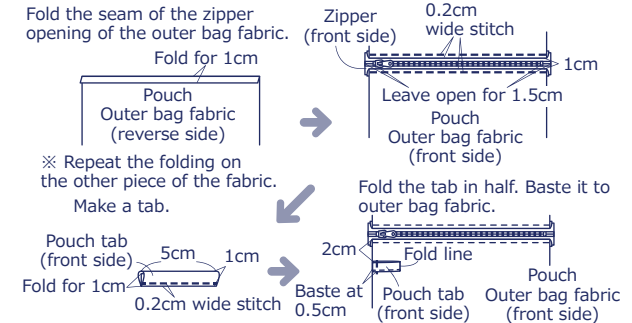
5. Sew the opening and the top opening



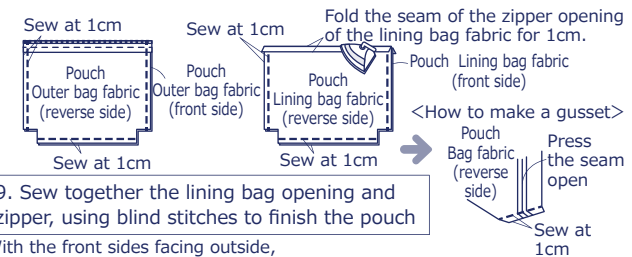
6. Turn it inside out. Put through the round cord to finish



7. Attach a zipper and tab on the outer bag fabric of the pouch



8. With the front sides facing each other, sew together the bag fabrics respectively at the sides, bottom and gusset



9. Sew together the lining bag opening and zipper, using blind stitches to finish the pouch

