



# Fluffy Bunny Kids Dress

Design & work: Naomi Nohara (lepolepo)

Size: For children with 90-100cm height. Length 55cm

have fun with KOKKA fabric! produced by KOKKA

[kokka-fabric.com](http://kokka-fabric.com)

The craft projects and works featured in kokka-fabric.com are strictly for personal use and enjoyment. Please refrain from selling handmade items using the same exact design (including the pieces made in different fabrics) featured in kokka-fabric.com.

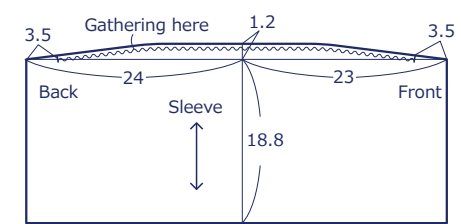
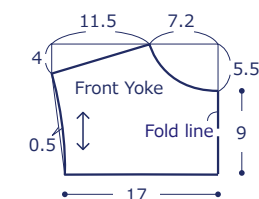
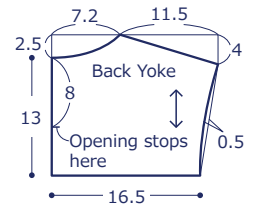
## Materials

- Fabric: 100cm wide x 1.2m
- Elastic tape: 34cm (Braid 6 cord)
- Button: One piece (1.1cm diameter)

Fabric shown for this sample: kotorinuno Usa Gingham EKX-2100-1B

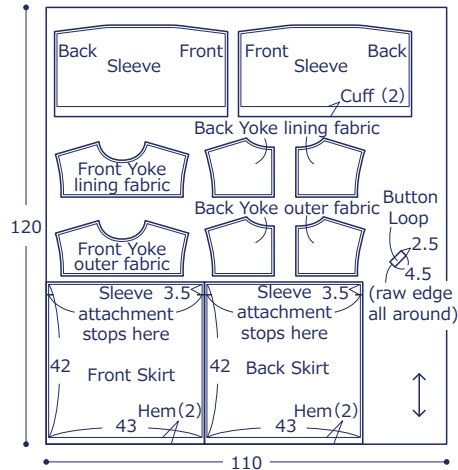
## Pattern

Unit: Centimeters (cm)



## Cutting Layout

Numbers ( ) denote seam allowance. 1cm seam allowance unless specified otherwise.



## Instructions

**1. Make the yoke**

① With the front sides facing each other, sew together the front and back yokes at the shoulder.

**2. Gather the skirt fabric**

① Apply rough stitches on the waist side.

② Pull the thread to gather the fabric.

• Repeat the same process for the back skirt.

**3. Sew together the yoke and gathering**

① With the front sides facing each other, sew together the yoke and skirt. Apply zigzag stitches on the seam and press it down to the yoke side and stitch.

**4. Attach the sleeve**

① Apply zigzag stitches on the seam of the sleeve head and under the sleeve.

② As in ②, gather the fabric at the sleeve head.

③ With the front sides facing each other, sew together the yoke and skirt.

• Repeat the same process on the other side.

**5. Finish the dress**

① With the front sides facing each other, sew together the front and back along the sides up to where the attachment stops, avoiding the seam of the sleeve.

② Sew the bottom of the sleeve, avoiding the seam of the sleeve head and armhole.

③ Fold the seam of the hem in three and sew.

④ With the front sides facing each other, sew together the back yoke lining fabrics up to where the opening stops.

⑤ With the front sides facing each other, sew together the back yoke outer fabrics and sew as in step ④.

⑥ Fold the seam of the sleeve in three. Stitch all the way around, leaving an opening for the elastic.

⑦ Put through the elastic tape (17cm each) and sew.

⑧ Attach the button.

**1. Make the yoke**

② Make the button loop and baste.

③ With the front sides facing each other, sew together the outer and lining fabrics from one end of where the opening stops to the other side.

④ Put the end of the needle hole inside the opening to turn over the piece.

⑤ Cut off the excess.

⑥ Put the end of the thread through the needle.

⑦ Curve the stitch line towards the end.

⑧ Avoid the outer fabric.

⑨ Opening stops here

⑩ Back stitches

⑪ Back yoke lining fabric (RvS)

⑫ Back yoke outer fabric (FrS)

⑬ Front yoke lining fabric (RvS)

⑭ Back yoke outer fabric (FrS)

⑮ Front yoke outer fabric (FrS)

⑯ Back yoke lining fabric (RvS)

⑰ Back yoke outer fabric (FrS)

⑱ Front yoke outer fabric (FrS)

⑲ Back yoke lining fabric (RvS)

⑳ Front yoke outer fabric (FrS)

㉑ Back yoke lining fabric (RvS)

㉒ Back yoke outer fabric (FrS)

㉓ Front yoke outer fabric (FrS)

㉔ Back yoke lining fabric (RvS)

㉕ Back yoke outer fabric (FrS)

㉖ Front yoke outer fabric (FrS)

㉗ Back yoke lining fabric (RvS)

㉘ Back yoke outer fabric (FrS)

㉙ Front yoke outer fabric (FrS)

㉚ Back yoke lining fabric (RvS)

㉛ Back yoke outer fabric (FrS)

㉜ Front yoke outer fabric (FrS)

㉝ Back yoke lining fabric (RvS)

㉞ Back yoke outer fabric (FrS)

㉟ Front yoke outer fabric (FrS)

㊱ Back yoke lining fabric (RvS)

㊲ Back yoke outer fabric (FrS)

㊳ Front yoke outer fabric (FrS)

㊴ Back yoke lining fabric (RvS)

㊵ Back yoke outer fabric (FrS)

㊶ Front yoke outer fabric (FrS)

㊷ Back yoke lining fabric (RvS)

㊸ Back yoke outer fabric (FrS)

㊹ Front yoke outer fabric (FrS)

㊺ Back yoke lining fabric (RvS)

㊻ Back yoke outer fabric (FrS)

㊼ Front yoke outer fabric (FrS)

㊽ Back yoke lining fabric (RvS)

㊾ Back yoke outer fabric (FrS)

㊿ Front yoke outer fabric (FrS)