



# Two-Way Clutch

Design & work: Yui Tamaki

Size: 15cm (l) 29cm (w) 12cm (d)

have fun with KOKKA fabric! produced by KOKKA

[kokka-fabric.com](http://kokka-fabric.com)

The craft projects and works featured in kokka-fabric.com are strictly for personal use and enjoyment. Please refrain from selling handmade items using the same exact design (including the pieces made in different fabrics) featured in kokka-fabric.com.

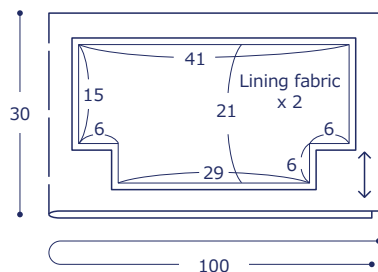
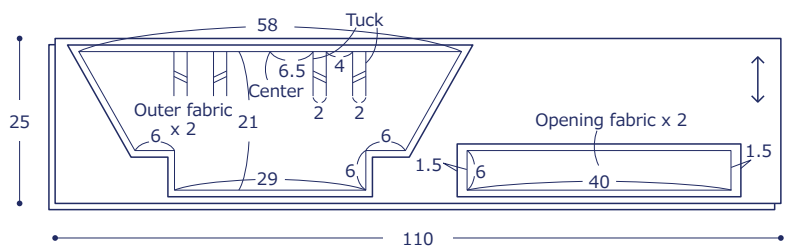
## Material

- Fabric (Outer fabric, top opening fabric): 110cm wide×50cm  
(Lining fabric (solid canvas)): 100cm×30cm
- Quilt batting: 70cm×50cm
- Spring loaded aluminum purse frame: One piece (24cm wide)
- Leather tape: 11cm (1.5cm wide)
- Paracord: 2m (0.4cm diameter)

Fabric shown for this sample: (Outer fabric, top opening fabric) echino EKV-90200-201B  
(Lining fabric (solid canvas)) echino solid JG-95410-10F

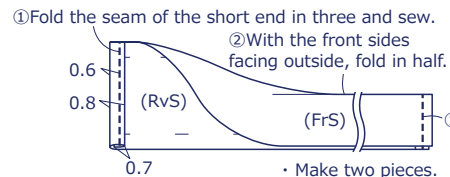
## Pattern and Cutting Layout

Unit: cm Add 1cm seam allowance unless specified otherwise.

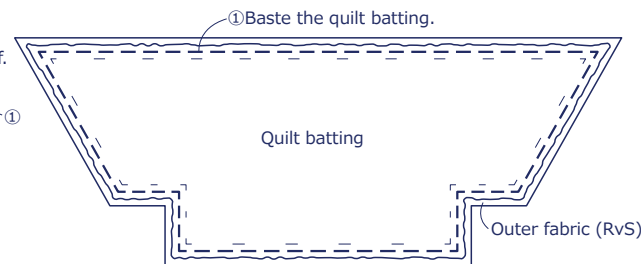


## Instructions Front Side - (FrS), Reverse Side - (RvS)

### 1. Make the top opening piece

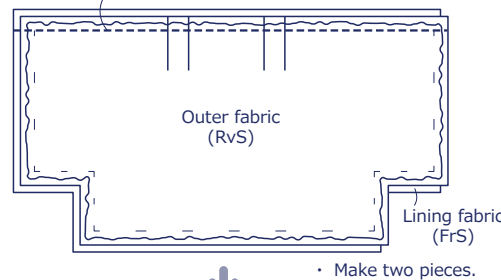


### 2. Make the outer fabric

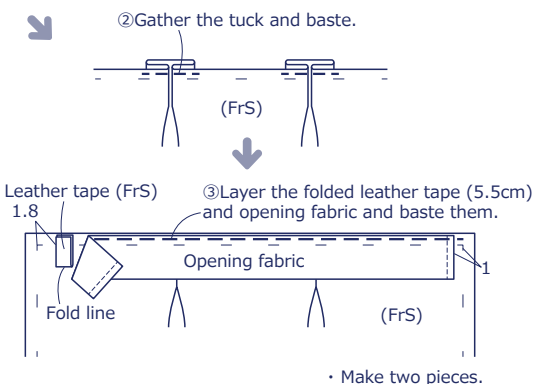
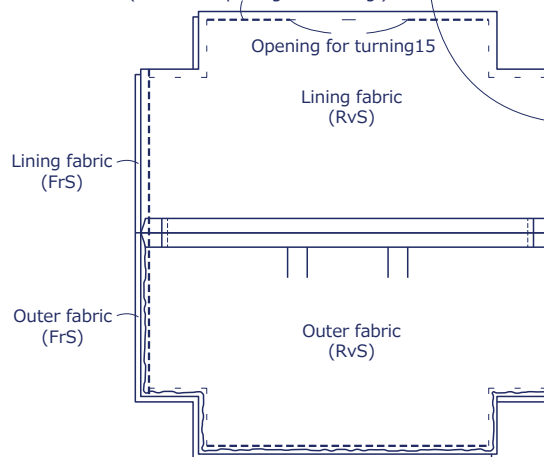


### 3. Sew together the outer and lining fabrics

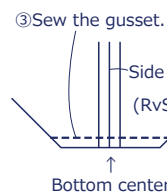
① With the front sides facing each other, sew together the outer fabric and lining fabric at the top opening.



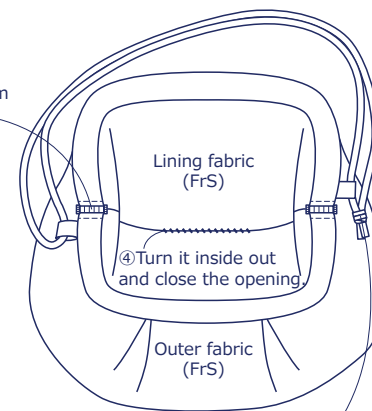
② With the front sides facing each other, sew together the outer fabric and lining fabric at the sides and bottom respectively. (Leave an opening for turning.)



⑤ Insert the spring loaded aluminum purse frame through the opening fabric and tighten the screw.



• Sew gussets in four locations.



⑥ Insert the paracord through leather loop and tie the cord.