



Kids Dress

Design & work: Aiko Hada

Size: For 100cm height Back Length 50.5cm

have fun with KOKKA fabric! produced by KOKKA

kokka-fabric.com

The craft projects and works featured in kokka-fabric.com are strictly for personal use and enjoyment. Please refrain from selling handmade items using the same exact design (including the pieces made in different fabrics) featured in kokka-fabric.com.

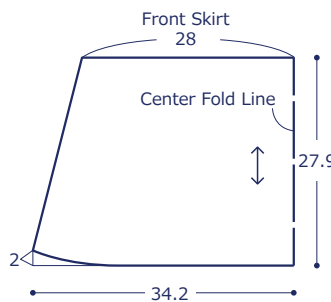
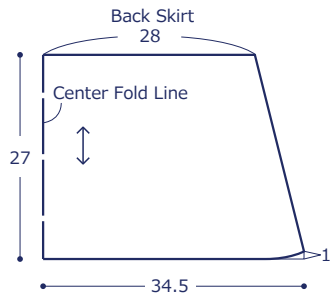
Materials

- Fabric (Body Outer Fabric, Skirt): 90cm×120cm
(Body Lining Fabric): 90cm×50cm

Fabric shown for this sample: trikotri EKX-2130-2A

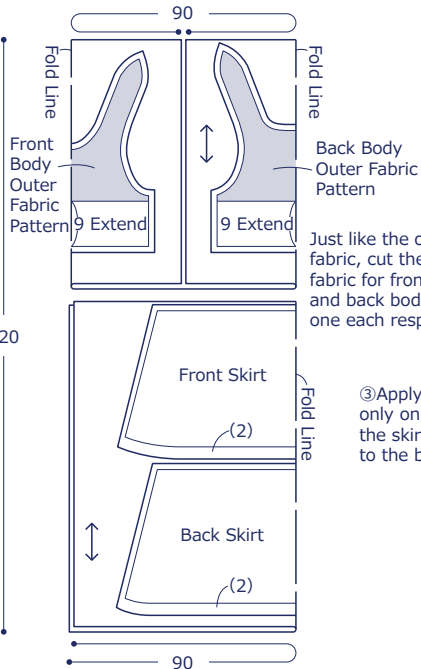
Pattern

Unit: Centimeters (cm) All raw edge.



Cutting Layout

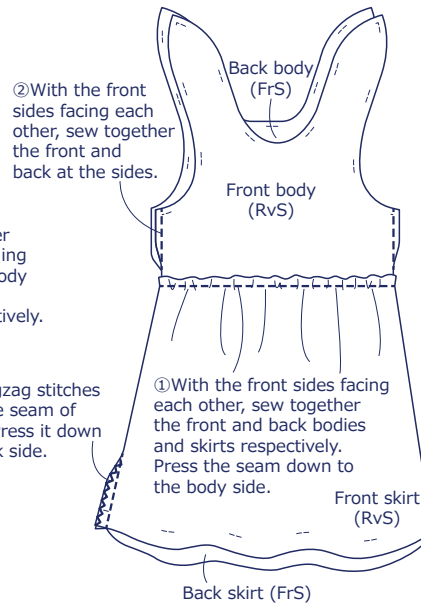
Numbers in () denote seam allowance.
1cm seam allowance unless specified otherwise.



Just like the outer fabric, cut the lining fabric for front body and back body, one each respectively.

③Apply zigzag stitches only on the seam of the skirt. Press it down to the back side.

3. Make the outer fabric

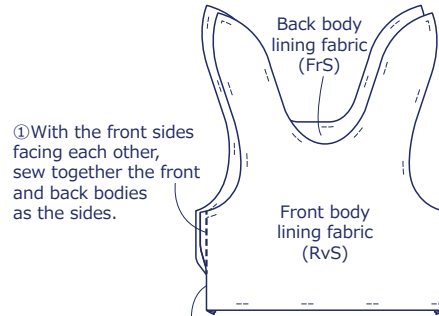


②With the front sides facing each other, sew together the front and back at the sides.

①With the front sides facing each other, sew together the front and back bodies and skirts respectively. Press the seam down to the body side.

Back skirt (FrS)

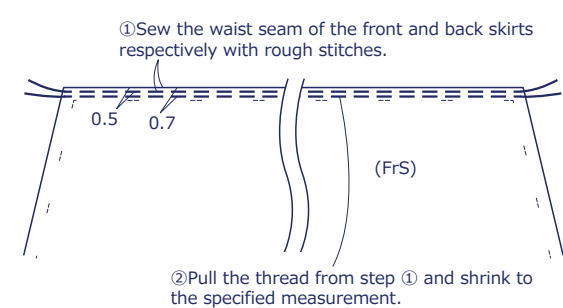
1. Make the lining fabric



①With the front sides facing each other, sew together the front and back bodies as the sides.

②Press down the seam to the back side.

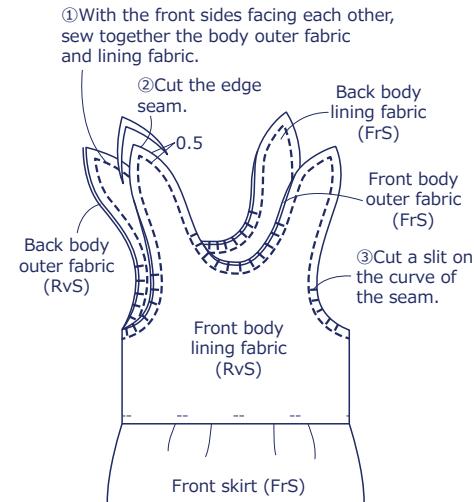
2. Make the gathering on the skirt



①Sew the waist seam of the front and back skirts respectively with rough stitches.

②Pull the thread from step ① and shrink to the specified measurement.

4. Sew together the outer fabric and lining fabric

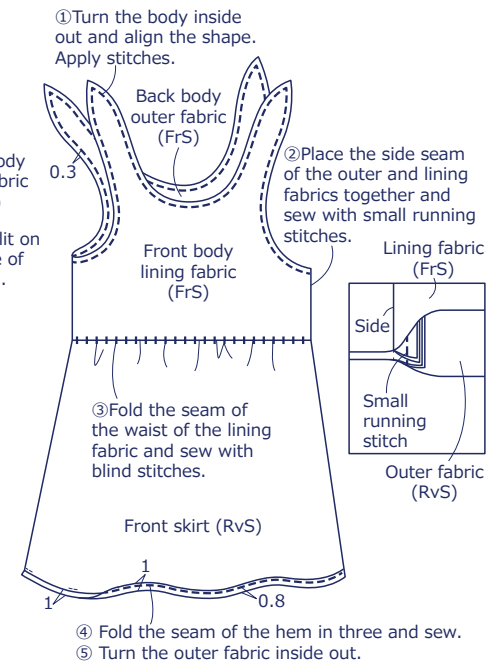


①With the front sides facing each other, sew together the body outer fabric and lining fabric.

②Cut the edge seam.

③Cut a slit on the curve of the seam.

5. Finish the dress



①Turn the body inside out and align the shape. Apply stitches.

②Place the side seam of the outer and lining fabrics together and sew with small running stitches.

③Fold the seam of the waist of the lining fabric and sew with blind stitches.

④ Fold the seam of the hem in three and sew.
⑤ Turn the outer fabric inside out.

Full-Scale Pattern

