

The craft projects and works featured in kokka-fabric.com are strictly for personal use and enjoyment. Please refrain from selling handmade items using the same exact design (including the pieces made in different fabrics) featured in kokka-fabric.com.

Pot Holder And Accessory Case

Design & work: Kokka Fabric

Size:

Pot Holder: about 10cm (height) x 11cm (diameter)

Accessory Case: about 10cm (height) x 11cm (bottom diameter)



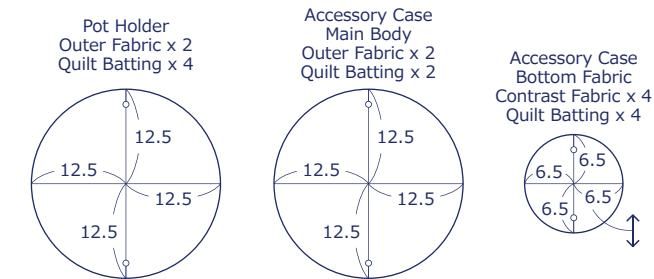
Materials

- Outer Fabric: about 110cm wide x 50cm
- Contrast Fabric: about 110cm wide x 20cm
- Quilt Batting: about 90cm wide x 60cm
- Tape: about 10cm wide x 18cm

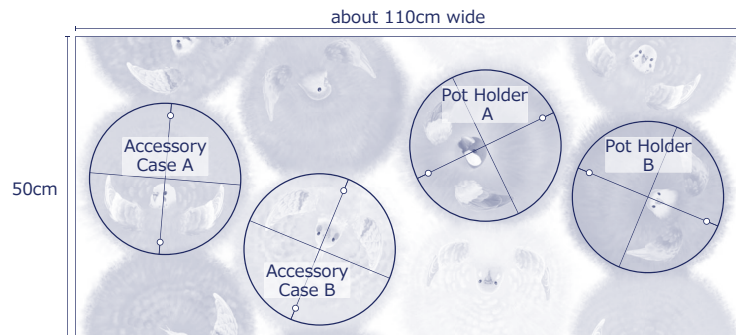
Fabric shown for this sample: YPA-36000-1A

Pattern & Cutting Layout

Unit: cm Measurement include seam allowance.

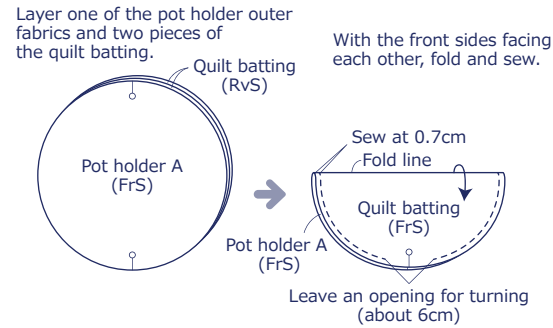


<Layout> ※ This is one example.

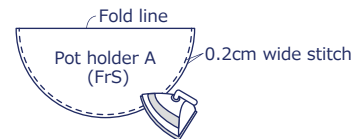


Instructions Front Side - (FrS), Reverse Side (RvS)

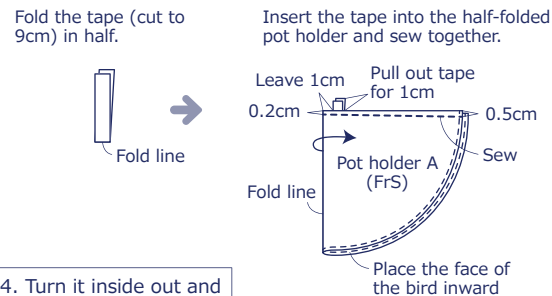
1. Sew together the outer fabric of the pot holder and quilt batting



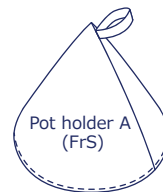
2. Turn it inside out and apply stitches



3. Sew together the pot holder and tape

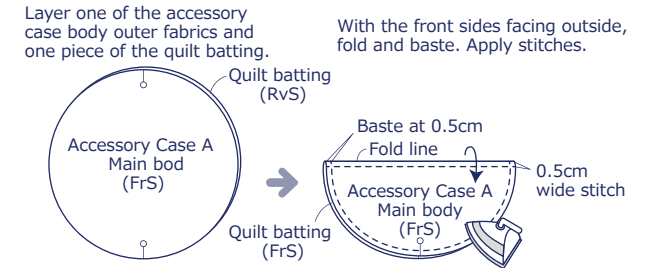


4. Turn it inside out and finish the pot holder

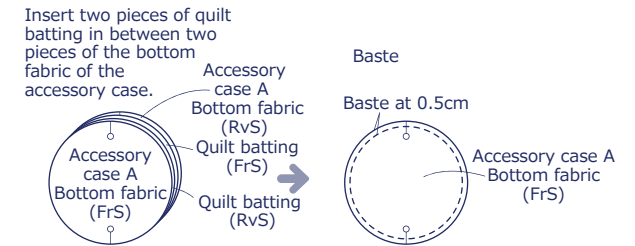


※ Repeat the same process for Pot holder B.

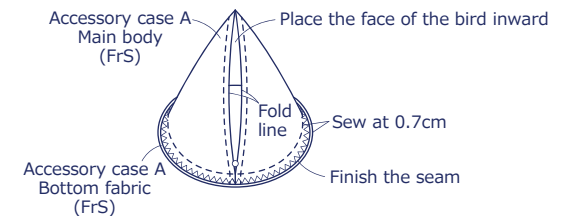
5. Make the main body of the accessory case



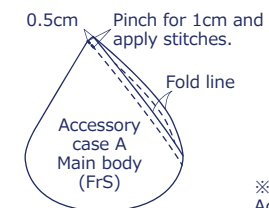
6. Sew the bottom fabric of the accessory case



7. With the front sides facing each other, sew together the main body of the accessory case and bottom fabric



8. Turn it inside out. Apply stitches to finish the accessory case



※Repeat the same process for Accessory Case B.