



# Children's Dress With Puffy Sleeves

Design & work: Kokka Fabric

Size: 110cm

have fun with KOKKA fabric! produced by KOKKA

[kokka-fabric.com](http://kokka-fabric.com)

The craft projects and works featured in kokka-fabric.com are strictly for personal use and enjoyment. Please refrain from selling handmade items using the same exact design (including the pieces made in different fabrics) featured in kokka-fabric.com.

## Materials

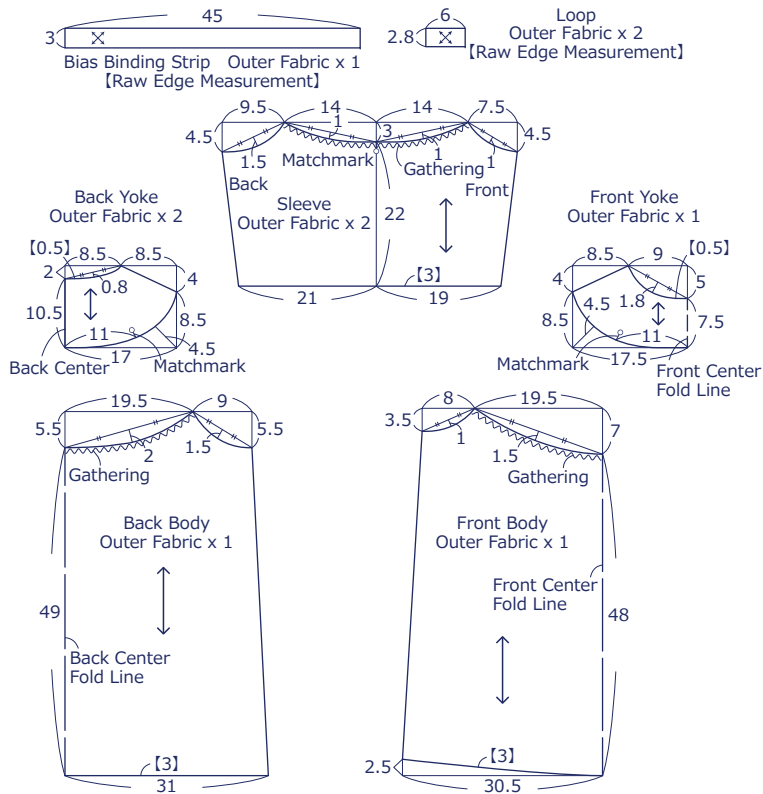
- Outer Fabric: about 110 wide x 170cm
- Elastic Tape: about 8mm wide x 44cm
- Button: about 11.5mm x Two pieces

Fabric shown for this sample: YKA-96030-2D

## Pattern & Cutting Layout

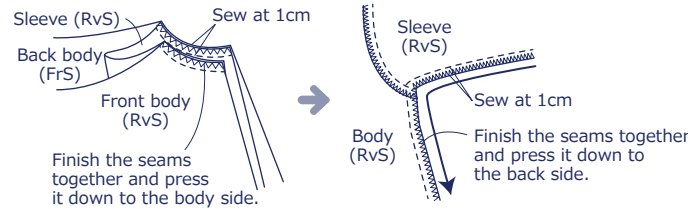
Unit: cm [ ] : Seam Allowance

When cutting the fabric, add 1cm seam allowance unless otherwise specified.

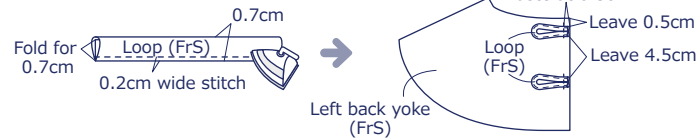


## Instructions Front Side - (FrS), Reverse Side (RvS)

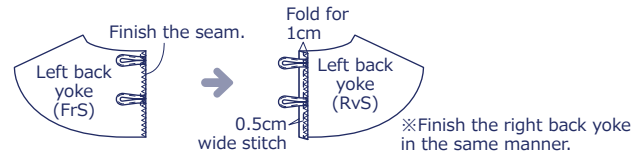
1. With the front sides facing each other, sew together the body and sleeve. With the front sides facing each other, sew together the bodies along the sleeve to the sides



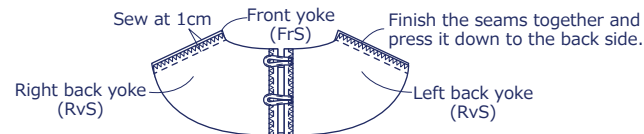
2. Make the loop and baste it on the left back yoke



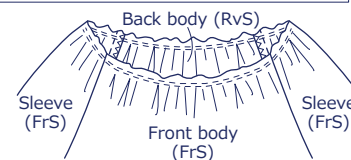
3. Finish the back center seam of the back yoke



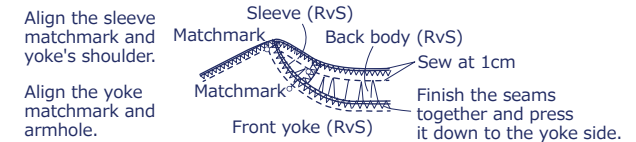
4. With the front sides facing each other, sew together the yoke at the shoulder



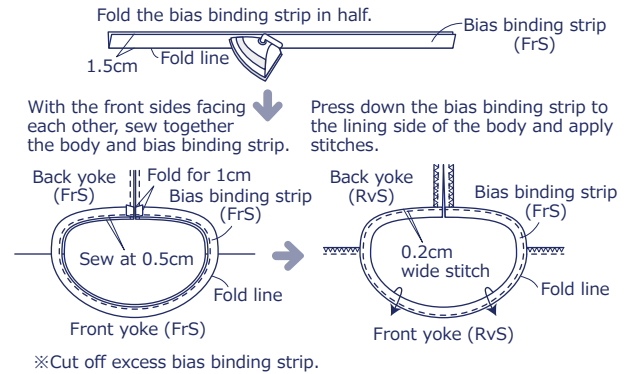
5. Make the gathering on the body and sleeve



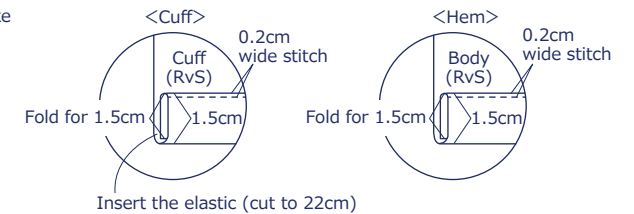
6. With the front sides facing each other, sew together the body and yoke



7. Finish the neckline with bias binding strip



8. Fold the cuff and hem in three and apply stitches



9. Attach the button on the right back yoke to finish

