



Quilted Pouch

Design & work: Kokka Fabric

Size: about 16cm (l)
about 20cm (w)
about 10cm (d)
(excludes handles)

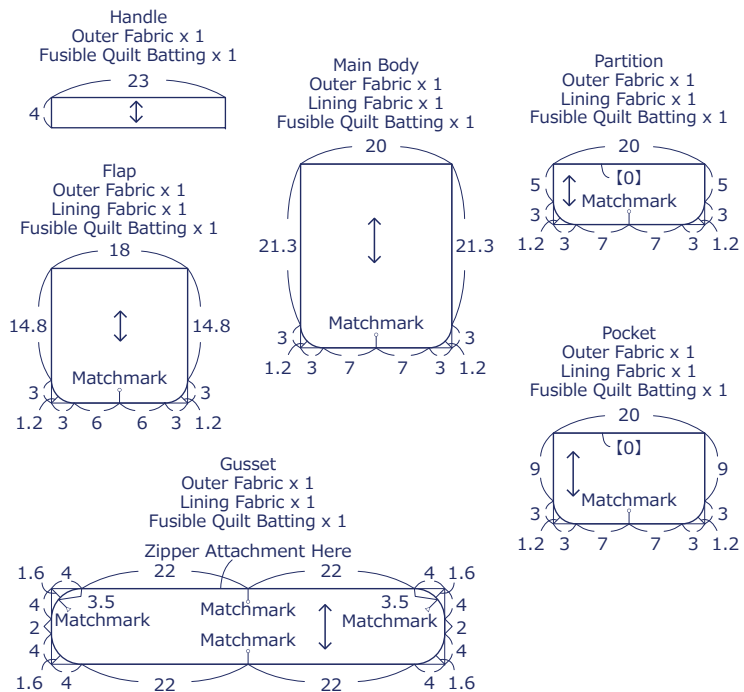
Materials

- Outer Fabric: about 110cm wide x 40cm
- Lining Fabric: about 110cm wide x 40cm
- Fusible Quilt Batting: about 90cm wide x 40cm
- Zipper: 50cm x one piece
- Bias Binding Tape: about 11mm wide x 260cm

Fabric shown for this sample: YPA-39000-2B

Pattern and Cutting Layout

Unit: cm [] : Seam Allowance When cutting the fabric, add 1cm seam allowance unless otherwise specified.

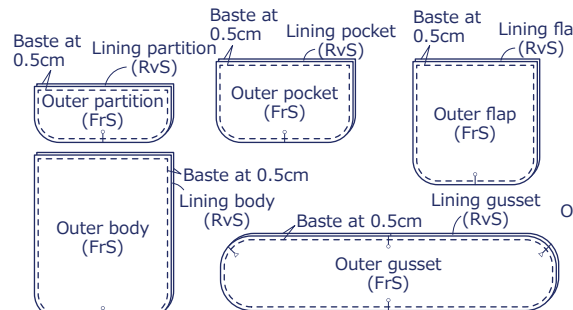


※Adhere fusible quilt batting on the back of the outer fabrics.

The craft projects and works featured in kokka-fabric.com are strictly for personal use and enjoyment. Please refrain from selling handmade items using the same exact design (including the pieces made in different fabrics) featured in kokka-fabric.com.

Instructions Front Side - (FrS), Reverse Side (RvS)

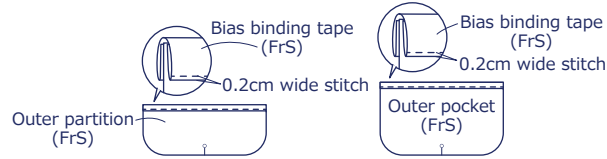
1. With the front sides facing outside, baste outer fabrics and lining fabrics except for handles



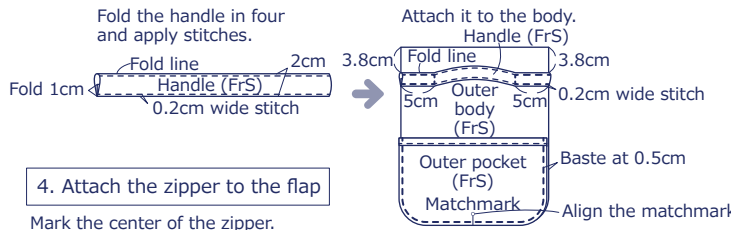
※dotted basting line not shown in the following steps

2. Finish the top edge of the partition and pocket

Wrap the edge with bias binding tape and apply stitches.

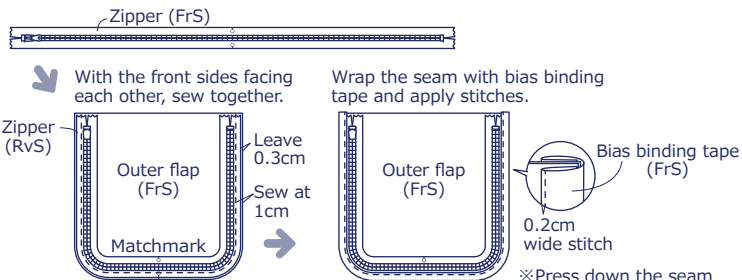


3. Make the handle. Attach the handle and pocket to the main body



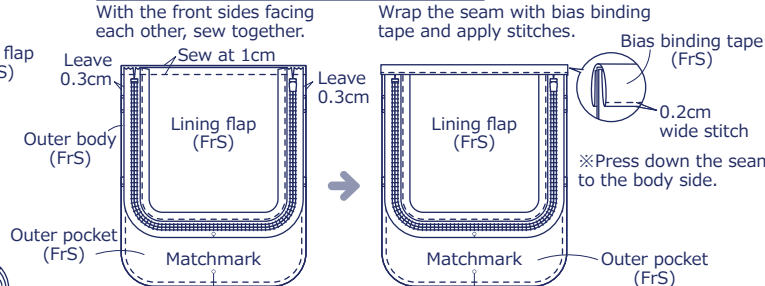
4. Attach the zipper to the flap

Mark the center of the zipper.

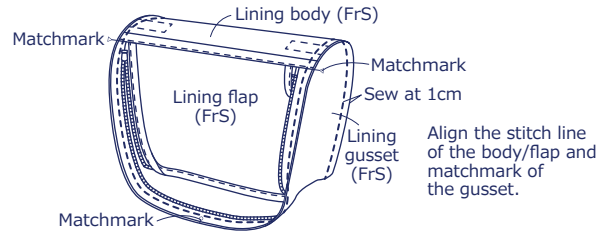


Align the zipper center and matchmark on the body.

5. Sew together the flap and main body

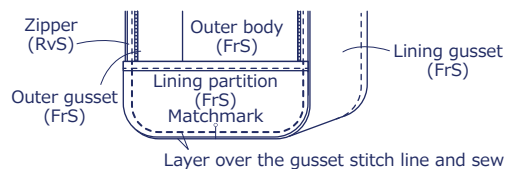


6. With the front sides facing each other, sew together the body - zipper and gusset



Align the zipper center and matchmark of the gusset.

7. Attach the partition to the gusset



Layer over the gusset stitch line and sew at 1cm.

8. Wrap the seam with bias binding tape and apply stitches. Turn the case inside out to finish

