



Cap Sleeve Blouse

Design & work: Yoko Kato

Size: 66cm (body width) 53.5cm (length)

have fun with KOKKA fabric! produced by KOKKA

kokka-fabric.com

The craft projects and works featured in kokka-fabric.com are strictly for personal use and enjoyment. Please refrain from selling handmade items using the same exact design (including the pieces made in different fabrics) featured in kokka-fabric.com.

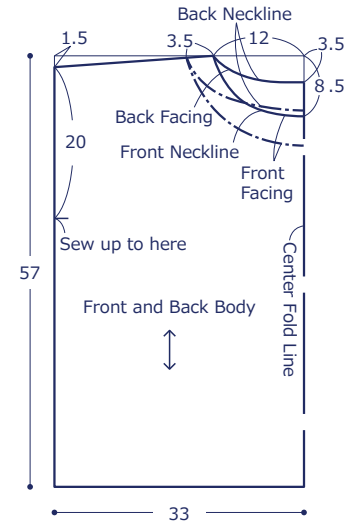
Materials

- Fabric: 110cm wide x 1.5m
- Fusible Interfacing: 80cm x 20cm

Fabric shown for this sample: NFA-1030-31D

Pattern

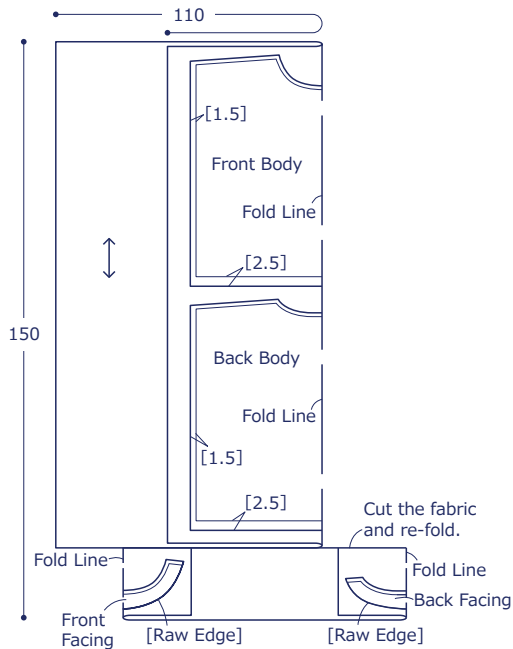
Unit: Centimeters (cm)



※Neckline pattern shown on the second sheet.

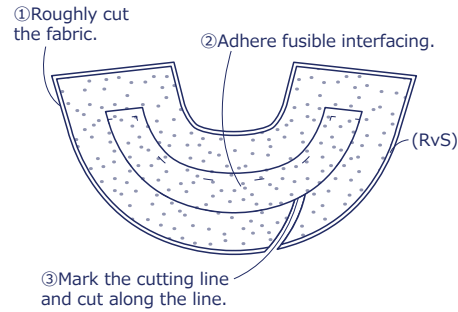
Cutting Layout

[] denotes seam.
Add 1cm seam unless otherwise specified.

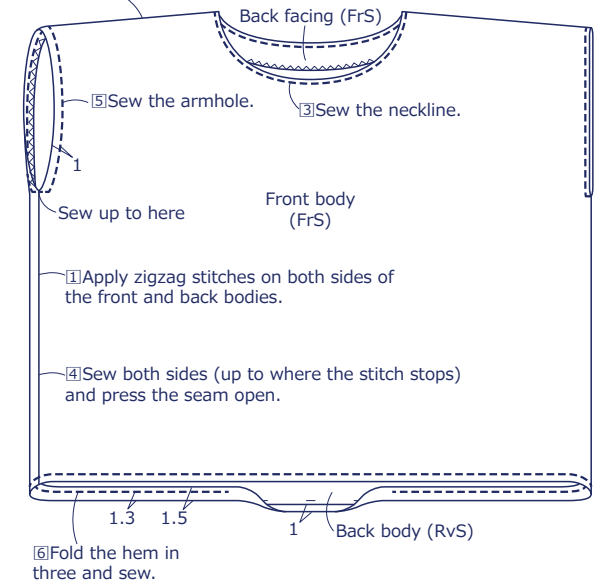


Instructions Front Side - (FrS), Reverse Side (RvS)

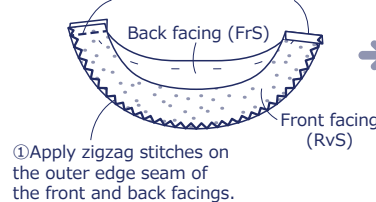
How to cut the facing



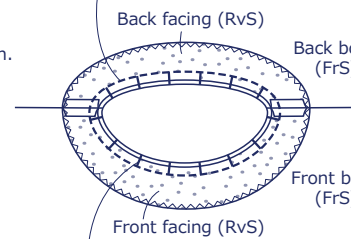
② With the front sides facing each other, sew together the front and back bodies at the shoulder. Finish the seams together and press it down to the back side.



③ With the front sides facing each other, sew together the front and back facings at the shoulder and press the seam open.

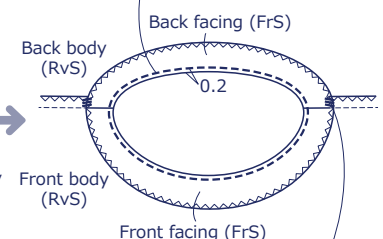


③ With the front sides facing each other, sew together the body and facing.



④ Cut a slit on the seam.

⑤ Turn the facing over to the reverse side of the body. Align the shape and apply stitches.



⑥ Secure the facing to the seam of the shoulder using blind stitches.

**Full-Scale Pattern
Neckline and Facing**

